

---

Premium Sliding Solutions

---

# GLIDE HARDWARE



Want sliding doors that consistently operate smoothly and quietly no matter how wide or heavy they are? How about hard-working, high-performance bi-fold doors with hardware capable of withstanding coastal conditions? Choose Glide Hardware. The award-winning patio rollers use a unique self-levelling mechanism to distribute the weight of the door evenly across every wheel to reduce wear, improve tolerances and durability, as well as enhance performance. Glide bi-fold door hardware offers an affordable choice of high-spec rollers, top guides, pull handles, hinges and more, all made to last from cast aluminium and compatible with major systems.

# Contents

## Sliding Patio Door Hardware

Advanced Patio Door Rollers	3
Concealed Handle	4
Soft Brake Device	4
Bump Stop	4



## Bi-fold Door Hardware

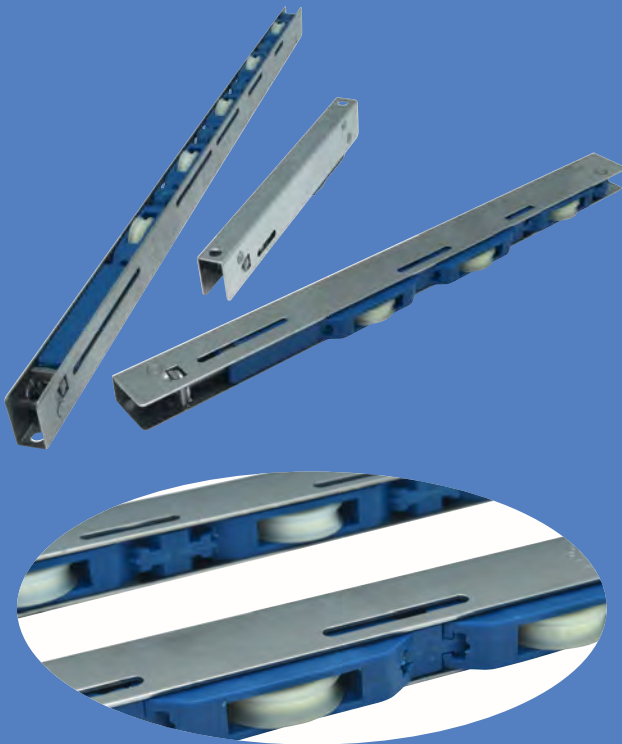
Top Guide Assembly	5
Roller Assembly	5
Mullion Top Guide for Passive Bi-fold Door	6
Mullion Roller for Passive Bi-fold Door	6
Handle with or without Escutcheon	7
D-Handle with Hinge	7
Stack-in D-Handle Hinge	8
Door Hinge	8
Magnets	9
Locking Shootbolt Gearbox	9
Cover for Shootbolt Gearbox	10
Shootbolt Rods, Cones & Guides	10



## Sliding Patio Door Hardware

More and more, architects and homeowners want sliding doors that offer uninterrupted panoramic views and greater thermal efficiency. Glide Hardware has been designed and manufactured to meet this upsized trend, delivering the improved durability, greater load bearing and high performance needed to cope with today's bigger and heavier, yet slim-framed patio doors.

Highlights of the range include; a unique self-levelling patio roller that uses a pressure-based mechanism to spread the weight of the door evenly and self-adjust to take heavy sashes, uneven tracks and bowing all in its stride; plus a clever pop-out patio door handle that's been fully tested to PAS 24.



## Advanced Patio Door Rollers

The most advanced patio roller system available on the market today will operate smoother, run quieter, last longer and easily support today's bigger, heavier, more narrow-profiled sliding patio doors compared to standard rollers that rely on traditional 'see-saw' mechanisms. That's all down to their unique self-levelling system, which achieves even weight distribution even under large loads, reduces wheel wear, increases durability and can ably tolerate bowed doors and track imperfections for an effortless, trouble-free user experience.



Triple Wheel  
Version



Five Wheel  
Version

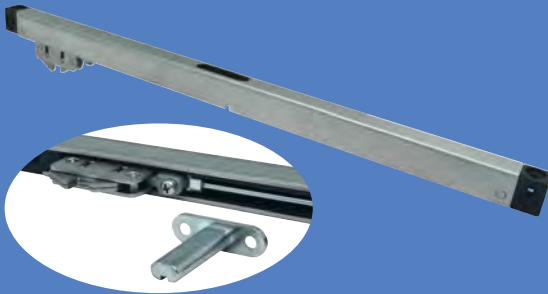
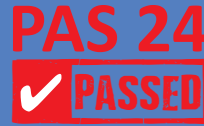


When used as part  
of your PAS 24 setup



### Concealed Handles

A new way for fabricators to maintain sleek sightlines whilst still achieving PAS 24 on their patio door assemblies and complying with Document Q and Lifetime Homes requirements for new build installations. This unobtrusive door handle works with a locking mechanism to secure the two sliding door panels together so the moving leaf can't be opened. When locked, the handle remains completely flush but pops out, ready for use at the push of a button.



### Soft Brake Device

When placed at both ends of travel of the sliding sash, this product eliminates the risk of trapped fingers, loud bangs, wall and door damage from excessive force. Upon opening or closing, the soft brake device catches the moving door before it can slam, then assists it quietly and safely to its final resting place for effortless usability and a premium feel.



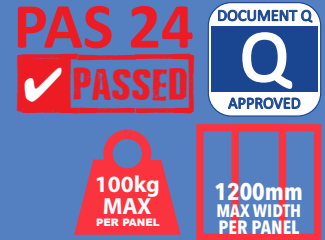
### Bump Stop

These bump stops are fitted horizontally to the bottom track to prevent the sliding door panel from opening too far.

## Bi-fold Door Hardware

Bi-fold Hardware to suit all folding door configurations and materials

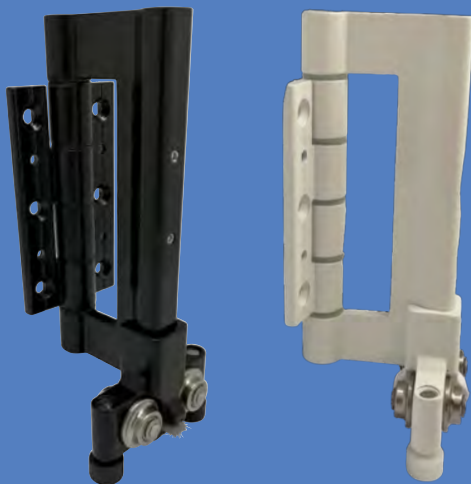
- Complete range of hinges, handles, rollers and more
- High-quality components
- Strong and durable
- Smooth slide and open mechanism
- Fully tested to PAS 24
- Suitable for door panels up to 100kg and 1200mm wide
- Quality manufactured to BS EN ISO 9001:2015



### Top Guide Assembly

This top guide assembly is used above the roller at the top of bi-fold door installations wherever two hinged door leaves sit in the running track. It works with the bi-fold roller to ably support moving door panels top and bottom and keep the whole system consistently tracking and operating smoothly.

- All rollers, clamp plates and fittings supplied
- Available in black RAL9005 and HIPCA white



### Roller Assembly

These robust bi-fold rollers are used at the bottom of folding door installations wherever two hinged panels are sitting directly onto the track. Each roller assembly works with a top guide to support the moving door leaves top and bottom and keep your bi-fold door system consistently tracking smoothly.

- All rollers, clamp plates and fittings supplied
- Available in black RAL9005 and HIPCA white



# Mullion Top Guide for Passive Bi-fold Door

These Mullion Top Guide for Passive Bi-fold Doors are used when you have an uneven number of bi-fold door panels. The mullion top guide sits in the nylon track at the top corner of a single hinged door panel and works with the mullion roller at the bottom to ensure effortlessly smooth fold and slide operation.

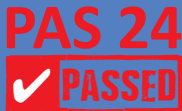
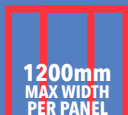
- Main body manufactured from corrosion-resistant die-cast ZP5 Zinc alloy
- \* Mounted on austenitic stainless-steel spindles
- Available in black RAL9005 and HIPCA white

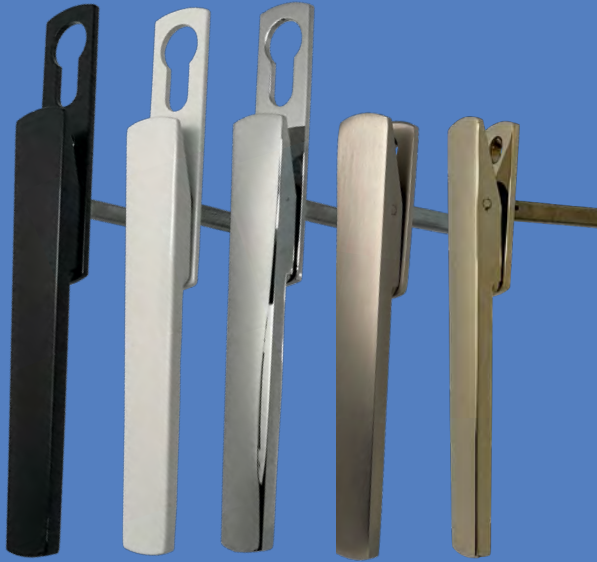


# Mullion Roller for Passive Bi-fold Door

This component is used when you have an uneven number of bi-fold door panels, this single mullion roller sits in the nylon track at the bottom of a single hinged door panel and works with the mullion top guide to ensure effortlessly smooth fold and slide operation.

- Chrome-plated brass wheels & high-quality bearings achieve smooth sliding function
- Main body manufactured from corrosion-resistant die-cast ZP5 Zinc alloy
- Available in black RAL9005 and HIPCA white





### Flat Door Handle with or without Escutcheon

This sleek and robust bi-fold shootbolt door handle accommodates a cylinder and works with the locking gearbox to operate the shootbolt system and secure the traffic door. Locking handles like these offer excellent crime-beating protection and increased peace of mind to keep security-conscious homeowners and insurance providers happy.

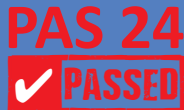
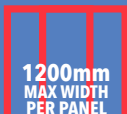
- Available in black RAL9005, HIPCA white, polished chrome, brushed steel and gold



### D-Handle with Hinge

Used instead of a centre hinge on stack-out bi-fold door configurations where two hinged panels do not sit on the track, providing extra leverage to pull the panels shut. Designed to form a strong, flexible and secure joint between door leaves, as well as give a smooth, superior folding action.

- Available in black RAL9005, HIPCA white and polished chrome



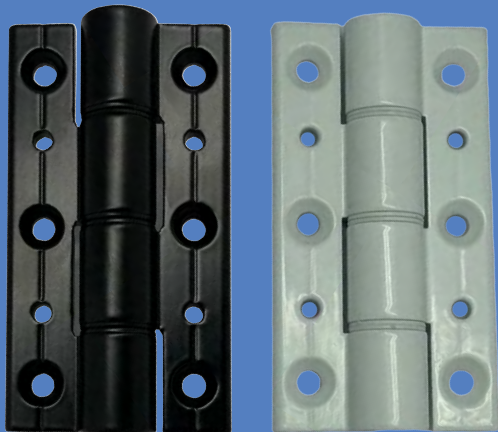




### Stack-in D-Handle Hinge

This open-in bi-fold door pull D-handle is designed for internal use on bi-fold door systems to deliver a firm, comfortable hold when opening and closing stack-in door sets.

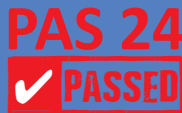
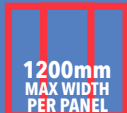
- Available in black RAL9005 and HIPCA white



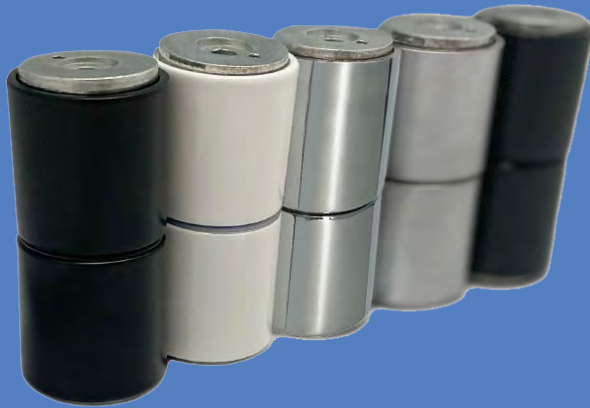
### Bi-fold Door Hinge

These high-quality PAS 24 compliant hinges are used to form a joint between two door panels or between the hinged door and frame to achieve a smooth, superior folding operation. And once the doors are shut, they'll ensure a flush, firm and secure seal to keep out moisture or drafts and deter burglars.

- Available in black RAL9005 and HIPCA white







# Round Bi-fold Door Magnets

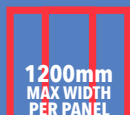
These round bi-fold magnets / bi-fold catches are designed to hold the door sashes securely in position when a bi-fold door is in the folded position

- Supplied as a pair of magnets
- 32mm diameter x 30mm high (individually) or 60mm (combined)
- Available in black RAL9005, HIPCA white, polished chrome, satin silver and anthracite grey RAL7016



# Locking Shootbolt Gearbox

Glide Hardware's rugged locking mechanism for bi-fold doors can be fitted to secure folding door sets in the closed position. The gearbox drives a sturdy 10mm wide shootbolt from the traffic door so it can't be forced open. This delivers PAS 24 certified security performance that meets Document Q requirements for new builds and brings added peace of mind to homeowners.



# Cover for Bi-fold Door Shootbolt Gearbox

This black plastic cover is designed to hide the shootbolt lock recess on the traffic door of a fold and slide door installation to give a neat and streamlined finish.

# Shootbolt Rods

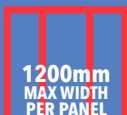
This M10 threaded shootbolt rod is 1500mm long and works with the Glide Hardware bi-fold locking gearbox to secure the traffic door on folding door installations against forced entry.

# Shootbolt Cones

Screwed to the end of the M10 threaded shootbolt rod, this end cone works with the rod end guide to direct the locking mechanism into location and aid compression

# Shootbolt Guides

Secured and mounted to the face of the sash, this end guide works with the rod end cone on a shootbolt rod to guide the locking mechanism into location and aid compression.



## Premium Sliding Solutions

Description	Sliding Doors	Bi-fold Doors	PAS 24	Document Q	Max Weights			Max Width 1200mm	Colours							Page no.
					100kg	150kg	200kg		Black	White	Chrome	Gold	Brushed Steel	Satin Silver	Anthracite Grey	
Advanced Rollers	●		●	●		●	●									3
Concealed Handles	●		●	●					●	●						4
Soft Brake Device	●															4
Bump Stop	●								●	●						4
Top Guide Assembly		●	●	●	●			●	●	●						5
Bottom Roller Assembly		●	●	●	●			●	●	●						5
Mullion Top Guide for Passive Doors		●	●	●	●			●	●	●						6
Mullion Roller for Passive Doors		●	●	●	●			●	●	●						6
Flat Handle with Escutcheon		●	●	●	●			●	●	●	●	●	●			7
Flat Handle without Escutcheon		●	●	●	●			●	●	●	●	●	●			7
D-Handle with Hinge		●	●	●	●			●	●	●	●					7
Stack-in D-Handle Hinge		●	●	●	●			●	●	●						8
Door Hinge		●	●	●	●			●	●	●	●					8
Door Magnets		●	●	●	●			●	●	●	●			●	●	9
Locking Shootbolt Gearbox		●	●	●	●			●								9
Cover for Shootbolt Gearbox		●	●	●	●			●	●							10
Shootbolt Rods		●	●	●	●			●								10
Shootbolt Rod Cones		●	●	●	●			●	●							10
Shootbolt Rod Guides		●	●	●	●			●	●							10

---

Premium Sliding Solutions

---

# GLIDE

---

# HARDWARE

W : [windowware.co.uk](http://windowware.co.uk) | T : 01234 242724 | E : [sales@windowware.co.uk](mailto:sales@windowware.co.uk)