

CONSUMABLES BROCHURE VOL.1

**WINDOW
WARE**

We've got it



Everything you need for a professional finish!

Whatever glazing job you're doing, when it comes to achieving a first-class finish, it's often the everyday essentials like sealants, fillers, and foams that can make the biggest difference to the end result! It follows then, that the first step towards a perfect outcome is always choosing the right tool for the task. And Window Ware is here to help!

Inside this carefully curated brochure, you'll find an extensive range of professional-quality silicones, acrylics, adhesives, foams, fillers and more, plus everything you need to apply the products properly and leave everything spotless afterwards, including skeleton guns, foam applicators, cleaners, wipes, and paper roll.

So, whether you're assembling corner joints on aluminium casements, sealing around door and window frames, filling joints or gaps, or repairing screw holes and cracks, we've got just what you need from your favourite brands, competitively priced and usually available for UK next day delivery!

The place to go for the industry's favourite brands:



How to enquire or place your order:



Call our sales office on 01234 242724 & choose option 1.



Log in to your trade account at www.windowware.co.uk



Talk to your Window Ware Area Sales Manager



Email sales@windowware.co.uk



Silicone Sealants	2-5
Perimeter sealing	
Sanitary use	
Lead & other metals	
Remover	
Skeleton guns	

Fillers	6-7
Acrylic caulk	
Gap filler	
Plaster & cement repair	

Glues, Adhesives & Polymers	8-10
Joint adhesive	
MS polymers	
Super Glue	

Cleaning Products	11-13
Glass cleaner	
Solvent cleaner	
Cream cleaner	
Tissue	

Fixing Foams	14-16
Foams	
Foam cleaners	
Foam applicator guns	

Silicone Sprays & Lubricants	17
------------------------------	----





Xpert 117 LMN Silicone



This low modulus neutral oxime curing multi-purpose silicone sticks firmly without primer to most surfaces including PVC, treated wood, aluminium, steel and glass*, making it ideal for sealing joints in construction and engineering applications. With the use of a primer, 117 LMN can also be used with confidence on alkali surfaces such as concrete and brick.

*Xpert 117 LMN silicone is not recommended for use on insulated glass (can affect the butyl sealing) or security glass (can affect the PVB film).

- For outdoor and indoor use in well-ventilated rooms
- High resistance to ageing, UV, weather conditions, low and high temperatures
- Not suitable for applications in continuous contact with water
- Permanent elasticity
- Neutral oxime curing system
- Application temperature: between 5°C & 40°C (do not apply when there is a risk of rain or frost)
- Skin forming time: 25-30 minutes at 23°C and 50% relative humidity
- Hardening rate: 2.5mm in 24 hours at 23°C and 50% relative humidity

COLOUR	RAL	SIZE	PART CODE	BOX QTY.
White	-	280ml	SIL20000	12
Clear	-	280ml	SIL20006	12
Brown	RAL8017	280ml	SIL20002	12
Black	RAL9005	280ml	SIL20005	12
Anthracite Grey	RAL7016	280ml	SIL20007	12



Parasilico AM85-1 Hi-grade Silicone



This high-quality neutral silicone stays elastic and water resistant, and achieves universal adhesion* without primer on metals, wood, stone and masonry, as well as synthetic materials such as plastic (PVC, polycarbonate and plexi). That makes it ideal for sealing joints and junctions in a multitude of construction projects in buildings, cars, boats and caravans.

*AM85-1 silicone does not stick to bitumen, polyethylene, PTFE or polypropylene

COLOUR	RAL	SIZE	PART CODE	BOX QTY.
White	RAL9003	310ml	SIL21000	12
Clear	-	310ml	SIL21006	12
Cream	RAL9001	310ml	SIL22003	25
Cream (Eurocell/Liniar)	RAL1015	310ml	SIL221015	25
Tauare Irish Oak	RAL1020	310ml	SIL22012	25
Brown	RAL8017	310ml	SIL21002	12
Chartwell Green	RAL6021	310ml	SIL226021	25
Agate Grey	RAL7038	310ml	SIL22008	25
Signal Grey	RAL7004	310ml	SIL227004	25
Basalt Grey	RAL7012	310ml	SIL227012	25
Slate Grey	RAL7015	310ml	SIL227015	25

- Easy to apply indoors and outdoors
- Water resistant
- Neutral, odourless and acid-free
- Excellent adhesion without primer
- Cannot be painted
- Permanent elasticity
- Retains original colour and is UV and weather resistant
- Withstands temperatures from -50°C to 150°C
- Meets ISO 11600 F in G2
- Application temperature: between 5°C & 40°C (do not apply when there is a risk of rain or frost)
- Skin forming time: 25 minutes (colours) or 10 minutes (clear) at 23°C and 50% relative humidity
- Hardening rate: 3mm in 24 hours at 23°C and 50% relative humidity

Parasilico Pro Glass-T



This transparent neutral oxime curing RTV-1 silicone sealant offers excellent adhesion without primer on most building materials including treated wood, ABS, aluminium, steel, glass, and PVC, making it perfect for sealing a wide range of connection, expansion and glazing joints in the construction industry. It is particularly well suited to placing and sealing insulated glazing and security glass, acting as a bedding layer for placing glazing and bonding packers directly to the glazing.

- Very easy to apply
- Excellent adhesion to most materials used in building and engineering
- Permanent elasticity
- High resistance to ageing, weather conditions and UK
- Temperature resistance: -50°C - +150°C
- *Does not affect the butyl sealing of insulated glazing or the PVB film of security glass
- Curing rate: 2.5mm – 3mm after 24h at 23°C and 50% R.H.
- MEKO-free

*Please refer to 'Points of Attention' section on page 2 of the technical datasheet

COLOUR	SIZE	PART CODE	BOX QTY.
Clear	290ml	SIL23106	12

Silirub N Neutral Cure



- General purpose low modulus neutral cure silicone
- Primerless adhesion on most surfaces
- Resistant to UV and ageing
- Permanently elastic after curing

COLOUR	RAL	SIZE	PART CODE	BOX QTY.
White	-	300ml	SIL40000	24
Brown	RAL8028	300ml	SIL40002	24
Clear	-	300ml	SIL40006	24

Silirub LMN Low Modulus Neutral Cure



- Superior quality low modulus neutral cure silicone sealant
- Primerless adhesion on most surfaces with high movement capability
- Resistant to UV, weather, as well as high and low temperatures
- Conforms to ISO 11600 F&G 25 LM

COLOUR	RAL	SIZE	PART CODE	BOX QTY.
White	-	300ml	SIL41000	24
Brown	RAL8028	300ml	SIL41002	24
Chartwell Green	RAL6021	300ml	SIL41004	24
Black	-	300ml	SIL41005	24
Clear	-	300ml	SIL41006	24
Oak	RAL1011	300ml	SIL41008	24

Silirub 2 Low Modulus Neutral Cure



- Premium quality low modulus neutral cure silicone for building and glazing
- 100% silicone with no shrinkage
- Primerless adhesion on most surfaces
- Independently tested to ISO 11600 F&G 25 LM
- Resistant to UV, weather, and high/low temperatures

COLOUR	RAL	SIZE	PART CODE	BOX QTY.
Brilliant White	RAL9016	300ml	SIL42000	24
Cream	RAL9001	300ml	SIL42003	15
Stone Cream	RAL1015	310ml	SIL42003S	15
Grey	RAL7015	300ml	SIL42001	24
Anthracite Grey	RAL7016	300ml	SIL42007	24
Brown	RAL8028	300ml	SIL42002	24
Clear	-	300ml	SIL42006	24
Irish Oak	RAL1011	300ml	SIL42008	15



Parasilico Premium T Sanitary Silicone



This high-quality neutral silicone sealant forms a flexible, water-resistant seal and is specifically designed for use in areas of high moisture such as baths, sinks and showers. It is neutral, odourless, and mould resistant with a smooth consistency that's easy work and apply. Parasilico sanitary sealant can be used on acrylic, sensitive metals (e.g. stainless steel, aluminium), ceramic tiles, plastic, glass and all other materials commonly found in wet rooms and bathrooms.

- Water resistant
- Anti-mould
- Resistant to UV, chlorine and temperatures from -50°C to +150°C
- Very easy to work and smooth
- Does not stick to hands or form threads
- Permanent elasticity
- Acid free
- Excellent adhesion without primer
- Application temperature: between 5°C & 40°C
- Drying time: Film formed after 6 minutes at 23°C and 50% relative humidity
- Hardening: 2.5mm in 24 hours at 23°C and 50% relative humidity

COLOUR	SIZE	PART CODE	BOX QTY.
White	310ml	SIL23000	12



Soudalead Pb



- Low modulus, neutral cure silicone sealant and filler for use on lead and other metals
- Very easy to apply (no mixing) with primerless adhesion
- Permanent colour
- UV resistant
- Stays elastic after curing
- Compatible with all lead types
- Virtually odourless

COLOUR	SIZE	PART CODE	BOX QTY.
Grey	300ml	SIL31000	25



Silirub A Sanitary



Soudal Silirub A is a general purpose acetoxy cure silicone sealant. Its thick formulation is easy to apply, adheres to most surfaces and remains elastic after curing. It can be used for all kinds of building and construction joints, but is particularly suited to sealing in refrigerators, cold store and container applications, plus air con systems due to its mould-resistant properties.

- Available in white or clear
- Easy to apply
- Very good adhesion on a wide range of materials (except natural stone)
- Stays elastic after curing
- Skin formation: 7mins at 20°C and 65% relative humidity
- Curing speed: 2mm/24h at 20°C and 65% relative humidity
- Typical vinegary smell
- Fungicide conforms to ISO 846 standard
- Performance conforms to EN 15651-1:2012: Type F and EN 15651-2:2012: Type G

COLOUR	SIZE	PART CODE	BOX QTY.
White	310ml	SIL57000	24
Clear	310ml	SIL57006	24



Silicone Remover



- Quickly removes spilled or hardened silicone or MS Polymer from a wide range of substrates
- Ready-to-use and fast acting
- Non-drip
- 100ml

PART CODE	BOX QTY.
SIL60001	12

Heavy Duty Dripless Mastic Gun



With its dripless trigger action the Xpert heavy duty mastic gun is a must-have purchase for every professional.

- Special trigger prevents material from being released after the last compression
- Cuts down on waste
- Saves mess
- Revolving
- Will hold up to a 400ml tube

CARTRIDGE SIZE	PART CODE	BOX QTY.
Up to 400ml	SIL99990	1

Skeleton Gun



- Made in the UK from high quality steel
- Takes up to 400ml cartridges
- Powerful trigger action, case hardened clutch plate, patented pressure relief device
- Welded steel, epoxy-coated frame. Zinc coated
- Ideal for both the professional and the DIY enthusiast

CARTRIDGE SIZE	PART CODE	BOX QTY.
Up to 400ml	SIL99998	1

Heavy Duty Revolving Caulk Gun



- Trade quality
- Barrel rotates to allow for smooth application of fillers and caulk
- Takes up to 400ml cartridges

CARTRIDGE SIZE	PART CODE	BOX QTY.
Up to 400ml	SIL99995	1

Skeleton Gun C/W Holdback



- Trade quality, heavy duty skeleton caulking gun
- Holds up to 400ml cartridges
- Ideal for both the professional and the DIY enthusiast

CARTRIDGE SIZE	PART CODE	BOX QTY.
Up to 400ml	SIL99999	1



Decorators Caulk

7.5%
Expansion Rate



- Acrylic polymer based sealant and filler
- Solvent free and virtually odourless
- Very easy to apply
- Colourfast and waterproof after curing
- Can be painted after curing
- Very good adhesion on many porous surfaces
- For sealing gaps round internal windows and door frames, skirting boards, architrave and coving etc.
- Can be used for filling small cracks in plaster

COLOUR	SIZE	PART CODE	BOX QTY.
White	300ml	SIL59001	25



Repair Express Plaster



This shrink-free acrylic polymer is perfect for the quick and easy filling or repair of small holes, static joints and cracks up to 2mm in walls and ceilings. Available in a tub or cartridge, the product can be applied by trowel or gun to plaster, plasterboard, concrete, stone, cellular concrete, masonry.

- High speed plaster repair
- Smooth finish
- Very fast curing – over-paintable in as little as 15 minutes depending on drying conditions and quantity of product used.
- Non-shrinking
- Sandable and paintable once dry
- Very good adhesion on many porous materials
- Colour: white
- Apply in temperatures +5°C to +30°C
- Available in 290ml cartridge or a 250ml tub

COLOUR	PACK	SIZE	PART CODE	BOX QTY.
White	Tube	290ml	FIL42900	12
White	Tub	250ml	FIL42503	12



Paracryl Parafill Acrylic Caulk

12.5%
Expansion Rate



Paracryl Parafill is ready-to-use and perfect for filling cracks, static joints, gaps, and holes up to 50mm deep and 50mm wide (larger joints must be filled in several steps with 1 day in between). It is easy to apply and has very strong adhesion on porous materials such as stone, concrete, brickwork, and plaster etc. It will not sag, shrink, or crack and is paintable once dry.

- Excellent adhesion without primer
- Does not sag, shrink or crack
- Suitable for indoor use only
- Paintable after a few minutes, ideally after ± 2 hours
- Can be abraded after 1 day
- Phthalate free
- Processing temperature: between 5°C & 35°C

COLOUR	PACK	SIZE	PART CODE	BOX QTY.
White	Tube	310ml	SIL24000	12
White	Tub	1 litre	FIL20001	12

Repair Express Cement



This acrylic polymer-based repair cement is designed to make filling and repairing joints and holes in concrete quick and easy. Available in a choice of grey or beige, with a granular texture that perfectly replicates the look of cement, Soudal Repair Express Cement achieves invisible repairs for a wide range of applications inside and out.

- For quick, easy and shrink-free repairs of holes and cracks in concrete and cement
- Repairing of joints in brickwork and damage in concrete stairs
- Excellent adhesion to many mineral surfaces
- Interior and exterior applications
- Very fast curing
- Textured finish
- Sandable and over-paintable once dry
- Apply in temperatures +5°C to +30°C
- Available in 290ml cartridge and 900ml tub so can be applied by gun or trowel.
- Choice of finishes: grey or beige

COLOUR	PACK	SIZE	PART CODE	BOX QTY.
Grey	Tube	290ml	FIL42901	12
Grey	Tub	900ml	FIL42903	6
Beige	Tube	290ml	FIL49001	6
Beige	Tub	900ml	FIL49003	6



Stelmax Filler 1961



Stelmax 1961 is used to provide a seal between the plastic window frame and the surround during installation. 1961 is formulated to fill larger gaps than Stelmax 1965 (up to 10mm).

Once cured, Stelmax achieves exceptionally strong, maintenance-free joints and a totally smooth polymer surface that stays clean and performs like rigid PVC to resist weathering, dirt and UV.

COLOUR	SIZE	PART CODE	BOX QTY.
White	300gm	STX19610	20
Brown	300gm	STX19612	20

Stelmax Filler 1965



Stelmax 1965 has smaller gap-filling properties compared to Stelmax 1961 (up to 5mm) and is used to provide a seal within the window frame.

Once cured, Stelmax achieves exceptionally strong, maintenance-free joints and a totally smooth polymer surface that stays clean and performs like rigid PVC to resist weathering, dirt and UV.

COLOUR	SIZE	PART CODE	BOX QTY.
White	135gm	STX21011	16
Cream RAL9001	135gm	STX21014	16
Clear	135gm	STX21013	25
Oak	135gm	STX21018	25
Brown	135gm	STX21012	25



Parabond Transparent Adhesive



There's virtually no limit to the different materials parabond multipurpose adhesive will stick to! This translucent MS polymer mastic forms a completely clear permanent bond between a huge range of smooth or porous surfaces, including traditional building substrates such as brick, plaster, stone, marble, granite, concrete and metal, as well as synthetic materials including polystyrene, polyurethane, chipboard and polycarbonate.

- Translucent - virtually invisible when gluing together layers of glass or acrylic
- Easy to apply
- Bonds also with slightly moist supports
- Good weather and UV resistance although there may be a small colour change over time
- Solvent free and virtually odourless
- Apply in temperature between 5°C & 40°C
- Skin formation time 15 min at 23°C and 50% relative humidity
- Curing rate: 2.5-3mm in 24 hours at 23°C and 50% relative humidity
- Paintable with most water and solvent based paints

COLOUR	SIZE	PART CODE	BOX QTY.
Clear	290ml	TGLU20006	12



Parabond Construction Adhesive



Parabond Construction is a versatile MS polymer based adhesive and elastic joint sealant. It bonds without primer on almost all construction materials including metal, natural stone, treated wood, plaster, glass and synthetic materials, though a primer is recommended for absorbent surfaces such as concrete and brick.

- Extremely strong universal MS polymer based adhesive sealant
- Permanent elastic so ideal for jointing and gluing where flexibility is important
- Temperature resistance: -40°C to +90°C
- Suitable for use with natural stone
- Does not cause any corrosion in metal joints
- Paintable with most water and solvent based paints
- Excellent U.V., weather and aging resistance
- Solvent, isocyanate, and phthalate free

COLOUR	SIZE	PART CODE	BOX QTY.
White	290ml	TGLU22000	12



Fix ALL High Tack



- Fix ALL® High Tack is a high quality, single component joint sealant with high adhesive strength. It is based on MS-Polymers®
- High initial tack reducing the need for initial support
- Fast curing, quick build-up of end strength, high shear strength after full cure (no primer)
- Easy to apply and easy to tool and finish
- Remains elastic after curing
- No odour
- Does not contain isocyanates, silicones or solvents
- Paintable with all water based paints
- Good colour stability, weather and UV resistance
- Mould resistant – contains XS1 fungicide

COLOUR	SIZE	PART CODE	BOX QTY.
White	290ml	TGLU40290HT	12



Fix ALL Crystal



- A 100% crystal clear sealant, adhesive and filler base on SMX Hybrid Polymers.®
- High performance mechanical properties
- Good extrudability even at low temperatures
- Ecological advantages – free of isocyanates, solvents, halogens and acids
- Minimal health and safety considerations
- Can be painted with water-based paints and a number of other systems {preliminary test required}
- Permanently elastic after full cure
- Invisible bonding of glass and other transparent materials
- Mould resistant – suitable for damp & humid surfaces

COLOUR	SIZE	PART CODE	BOX QTY.
Crystal	290ml	TGLU46290	12

Stelmax Adhesives 1985



- Stelmax 1985 Adhesive is a PVC resin and solvent based adhesive which is used extensively in the window industry during the installation of frames and attachments.
- It forms exceptionally strong maintenance-free joints between both plasticised and rigid PVC and ABS.

COLOUR	SIZE	PART CODE	BOX QTY.
White	135gm	GLU30000	16
Clear	135gm	GLU30001	16

Soudabond 641
Aluminium Adhesive

Soudabond 641 is a high-strength 1-component polyurethane assembly adhesive specially developed for bonding mitre corner joints in aluminium windows. The foaming penetration action works to fill bond cavities, with functional bonding strength achieved in 24 hours and full cure in 7 days under normal conditions. Also suitable for bonding other metals.

- Excellent adhesion on aluminium
- Suitable for pre-injection assembly systems
- Fast strength build-up and very high final strength – 11 N/mm² (on Al99)
- Long open time
- Moisture curing
- Apply in temperatures: 5°C to 35°C
- Skin formed in 20 mins at 23°C and 50% relative humidity
- Curing speed: 2-3mm/24h at 23°C and 50% relative humidity
- Good weather and temperature resistance: -30°C to 100°C

COLOUR	SIZE	PART CODE	BOX QTY.
Grey	310ml	SIL80000	25

DON'T LET GENERIC HAND TOOLS HOLD YOU BACK

Choose quality glazing tools and consumables specifically designed for use in the window and door industry.



DESIGNED BY XPERTS.
FOR EXPERTS.





Super Glue



- Fast bonding of non-porous surfaces, such as rubber, metals, plastic, glass etc.
- Adhesion can be accelerated using Xpert Super Glue Activator
- Super fast adhesion
- High bond strength
- Available in low, medium, or high viscosity

VISCOSITY	20g	50g	BOX QTY.
Low	GLU20202B	-	25
Medium	GLU20201B	GLU20501B	25
High	GLU20203	-	25



Super Glue Activator



- Solvent-based aerosol spray activator
- Works with Xpert super glue to speed up adhesion
- Non-yellowing
- Reduces bloom and odour

SIZE	PART CODE	BOX QTY.
200ml	GLU72204	12



Superglue HV



- Cyanoacrylate based high viscosity adhesive
- High bond strength
- Super fast curing
- High viscosity
- Thixotropic
- Works on most non-porous materials

VISCOSITY	50g	BOX QTY.
High	GLU20503	25



Superglue Activator



- Aerosol activator for use with Soudal cyanoacrylate based high viscosity superglue
- For use on most non-porous substrates
- Achieve instant cure
- Reduces blooming and odour

SIZE	PART CODE	BOX QTY.
200ml	GLU70000	12

Glass Cleaner



- Trade strength glass cleaner
- Removes grease and dirt
- Quick-action non-smearing cleaner

SIZE	PART CODE	BOX QTY.
1 litre spray	PGC10100	12
5 litre refill	PGC10500	4
25 litre refill	PGC12500	1

Pro Glass Cleaner



- Alcohol-based cleaner for glass and mirrors
- High performance
- Fast drying, non-smear

SIZE	PART CODE	BOX QTY.
1 litre spray	PGC10100B	12

Glass & Mirror Foam Cleaner



Achieve a sparkling, streak-free finish on glass, mirror, plastics, and other hard surfaces with this sprayable aerosol foam cleaning agent from Soudal. This professional-quality product makes light work of removing grease, fingerprints, insect dirt, nicotine, soap residue and general dirt on most shiny surfaces.

- Multipurpose foam glass and mirror cleaner
- Fast drying, no streaks
- Non-drip
- Scented
- High yield 750ml aerosol can

SIZE	PART CODE	BOX QTY.
750ml	PGC40100	12



PVCu Solvent Cleaner



- Heavy duty solvent-based cleaner for PVCu materials
- Removes mastic, sealant, grease and dirt

SIZE	PART CODE	BOX QTY.
1 litre	SOL10100	12



PVCu Solvent Cleaner



- Solvent-based cleaner for PVCu materials
- Removes mastic, sealant, grease and ingrained dirt

SIZE	PART CODE	BOX QTY.
1 litre	SOL10100B	12



PVCu Cream Cleaner



- Heavy duty cleaner for PVCu materials such as window and door frames
- Domestic and industrial cleaning applications
- Non-scratch

SIZE	PART CODE	BOX QTY.
1 litre	PUC10100	12



PVCu Cream Cleaner



- General purpose cream cleaner
- For use on PVC window frames, trims, fascia and cladding

SIZE	PART CODE	BOX QTY.
1 litre	PUC10100B	12

UltraGrime Industrial Wipes (pack of 100)



- Efficiently removes oil, grease, ink, paint, silicone, uncured PU foam, adhesives and much more
- Removed wipes stay wet and usable for over 60 minutes
- 100 super-strong XXL cloth wipes (38mm x 25mm)
- Powerful, yet safe to use on all surfaces
- Gentle on skin – alcohol-free with vitamin E and aloe extract
- 100% recyclable packaging. Over 77% less plastic than regular tubs

SIZE	PART CODE	BOX QTY.
38 x 25cm	UWU10000	6

Paper Rolls



- Heavy duty industrial towels 2-ply
- Small or large roll size

SIZE	COLOUR	PART CODE	BOX QTY.
200mm x 150m (small)	White	TPP22015	6
280mm x 400m (large)	White	TPP22740	2

Multi Purpose Cleaning Wipes



- Heavy duty cleaning wipes
- Removes adhesives, sealants, oils, paints and grease from hands, tools and non-porous surfaces
- Kind to skin
- Plastic tub contains 100 wipes

SIZE	PART CODE	BOX QTY.
Tub	SOW10000	1

SOUDAL

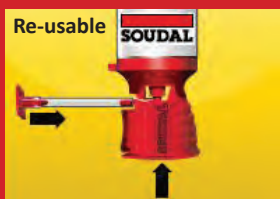
**Soudafoam
Gap Filler Genius Gun®**



Perfect use with one hand



Accurate application
Perfect control of extrudability of the foam



Re-usable
Possible to re-use up to 6 weeks after first use

Regular users of hand held PU foam are often frustrated by inconvenient two-handed operation, difficulty of application and a limited shelf life after first use. The GENIUS GUN® is different! This specially designed patented trigger mechanism ensures precise dosage and removes the need for an additional gun. Simply Genius!

- Soudafoam Gap Filler Genius Gun® is a one component, polyurethane expanding foam
- Excellent form stability; no shrink; no post expansion
- Excellent filling characteristics
- Excellent adhesion to all building materials (except PE, PP and PTFE)
- High insulation values, both thermal and acoustical

SIZE	PART CODE	BOX QTY.
600ml	FIF50800	12

SOUDAL

**Soudafoam
Window & Door
Genius Gun®**



Perfect use with one hand



Accurate application
Perfect control of extrudability of the foam



Re-usable
Possible to re-use up to 6 weeks after first use

This hand-held polyurethane expanding foam filler delivers professional filling around PVCu, aluminium and wooden windows and doors. The patented Genius Gun® trigger mechanism is designed for easy use and single-handed operation, while the re-sealable applicator enables the product to be re-used for up to 6 weeks after first use.

- Polyurethane foam filler with high linear expansion designed for use around all types of windows & doors.
- Primer-less adhesion on most construction materials
- Rapid moisture curing - skin Formation (EN 17333-3) in 8.5 minutes.
- Excellent thermal and acoustic insulation properties (see technical datasheet)
- Linear yield FEICA TM1002 - 750ml Gun Grade: 26M
- Application temperatures: +5°C to +30°C

SIZE	PART CODE	BOX QTY.
600ml	FIF50801	12

- 600ml aerosol can
- Colour: champagne

Parafoam Gun Grade Foam



Parafoam NBS, developed by DL Chemicals, is ideally suited to a wide range of filling and sealing jobs, such as eliminating gaps around door and window frames, or plugging small cavities in brickwork. It boasts excellent thermal and noise insulation properties, plus it will stick to most surfaces, including stone, concrete, plaster, wood, metal and rigid plastics.

- One-component polyurethane gun filler foam
- Moisture-curing polyurethane prepolymer - works in low temperatures and in wet conditions
- Applicator gun enables easy, effective and precise foam delivery
- Excellent noise and insulation properties
- Can be painted or plastered once dry
- Temperature resistance: -50°C and +90°C)
- This product is NOT UV-resistant

SIZE	PART CODE	BOX QTY.
750ml	FIF50600	12

Soudafoam® B3 Gun Grade Foam



This Soudal gun foam is a one component, self expanding ready to use foam. Suitable for general purpose filling of gaps, cavities and openings in installations and construction.

- Adhesion on most substrates
- Precise application with foam gun system
- High thermal and acoustic insulation
- High 3D expansion
- Very stable (unlikely to shrink after application)

SIZE	PART CODE	BOX QTY.
700ml	FIF50700	12



PU Foam & Gun Cleaner



This PU foam and gun cleaner can be used to remove every last trace of freshly-applied insulation foam on surfaces, as well thoroughly clean the foam gun, valve and trigger of any residual foam product. Cleaning must always be done before the foam is dry, otherwise it can only be removed mechanically.

- Tip: before use, test in an inconspicuous place to avoid damage of delicate surfaces.

* Do not dilute

SIZE	PART CODE	BOX QTY.
500ml	FIF22002	12



Gun Foam Cleaner



- Aerosol applied solvent based polyurethane foam cleaner used for the cleaning of PU foam applicator guns and gun valves
- Uncured PU foam can also be easily removed with the attachable spray nozzle
- Quick & easy to use
- Attachable spray nozzle

SIZE	PART CODE	BOX QTY.
500ml	FIF50000	12



Foam Gun



- Precise application of PU foam
- Stainless steel nozzle
- Full teflon-coated basket and internal parts
- Length: 200mm

USE | CLEAN | REPEAT !

To keep your foam gun in good working order clean regularly

PART CODE	BOX QTY.
GUN10000	1

Silicone Spray



- Transparent silicone based lubricant and protectant spray for plastic, rubber, and synthetic parts
- Typical applications include sliding doors and rubber seals, lubricating gutter and pipe seals
- Very high temperature resistance up to 200°C
- Protects against dirt and grease
- Water-repellent

SIZE	PART CODE	BOX QTY.
400ml	SIL30400	12

8 In 1 Multi Spray



High quality universal spray with eightfold action:

1. Rust dissolver
2. Lubricant
3. Cleaner
4. Water repellent
5. Penetrating oil
6. Corrosion resistant
7. Contact spray
8. Shock spray

SIZE	PART CODE	BOX QTY.
400ml	SIL30401	6

Specialist Multi-purpose Oil with PTFE Lubricant



3-in-one with added PTFE is a multi-purpose lubricant spray that works to clean, stop squeaks and protect surfaces and metal parts from rust and corrosion.

- Reduces wear on parts
- Extends life of tools & equipment
- Outstanding performance
- Delivers a protective film
- Superior lubrication and longer-lasting protection
- Low friction characteristics
- 250ml

Guarantees & accreditations:

- ANSI/ESD S20.20.2014
- BS EN 61340-5-1:2007



SIZE	PART CODE	BOX QTY.
250ml	SIL30402	12

Specialist White Lithium Grease



This aerosol grease provides heavy-duty lubrication in a range of metal-to-metal applications such as hinges, gears, cables, sprockets, metal tools and equipment, and much, much more. This long-lasting formula sprays on evenly as a liquid, then sets dry to form a rust-inhibiting barrier that protects against corrosion and won't rub off.

- Long-lasting lubrication and protection
- Won't freeze, melt or run in extreme weather conditions
- No Prop 65* Chemicals
- Ideal for metal-to-metal applications
- 50-state VOC Compliant
- Withstands temperatures from -30 °C to +140 °C
- Sprays upright or inverted
- NSF H2 Reg. # 146864
- Store in a cool, well-ventilated area away from direct sunlight

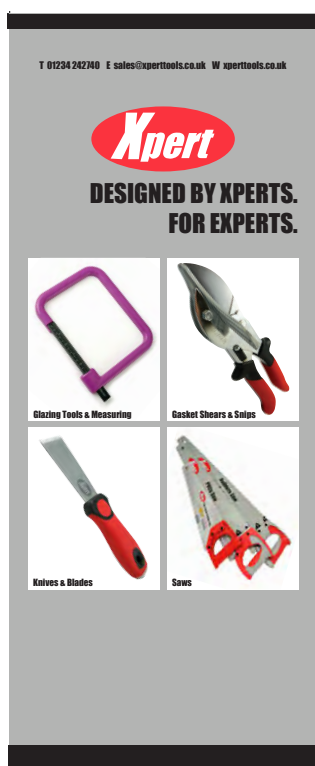


SIZE	PART CODE	BOX QTY.
400ml	SIL44016	12

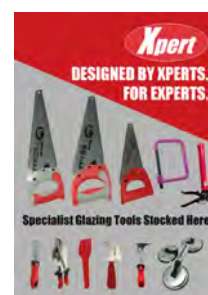
Need Point-of-Sale marketing support for your retail space? Window Ware has got you covered!

We do so much more than just supply products. We can help you promote and display them in store too! So, whether you want posters or leaflets, eye-catching outer packaging for your shelves, pop-up banners or free-standing display units, then we've got just what you need to make your stock really stand out!

Get in touch. Email: marketing@windowware.co.uk



View the Xpert
marketing support



T | 01234 242724
W | windowware.co.uk
E | sales@windowware.co.uk

Window Ware
Telford Way, Cross Park
Bedford MK42 0PQ