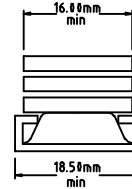


ISSUE	E.C.N.	DATE	MOD. BY.
2	6123	22.08.03	B.J.B
3	6344	11.08.05	B.J.B

# HSR201(INLINE)

Side Hung + Top Hung

MIN/MAX WORKING CLEARANCE.

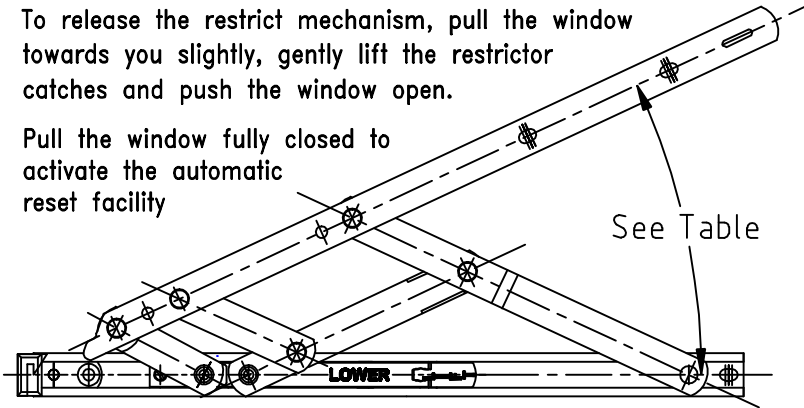


EXAMPLE :  
13.0 mm STACK  
MIN. 13.0 mm  
MAX. 14.0 mm

To release the restrict mechanism, pull the window towards you slightly, gently lift the restrictor catches and push the window open.

Pull the window fully closed to activate the automatic reset facility

See Table



ENSURE FIXING SCREWS ARE FLUSH.

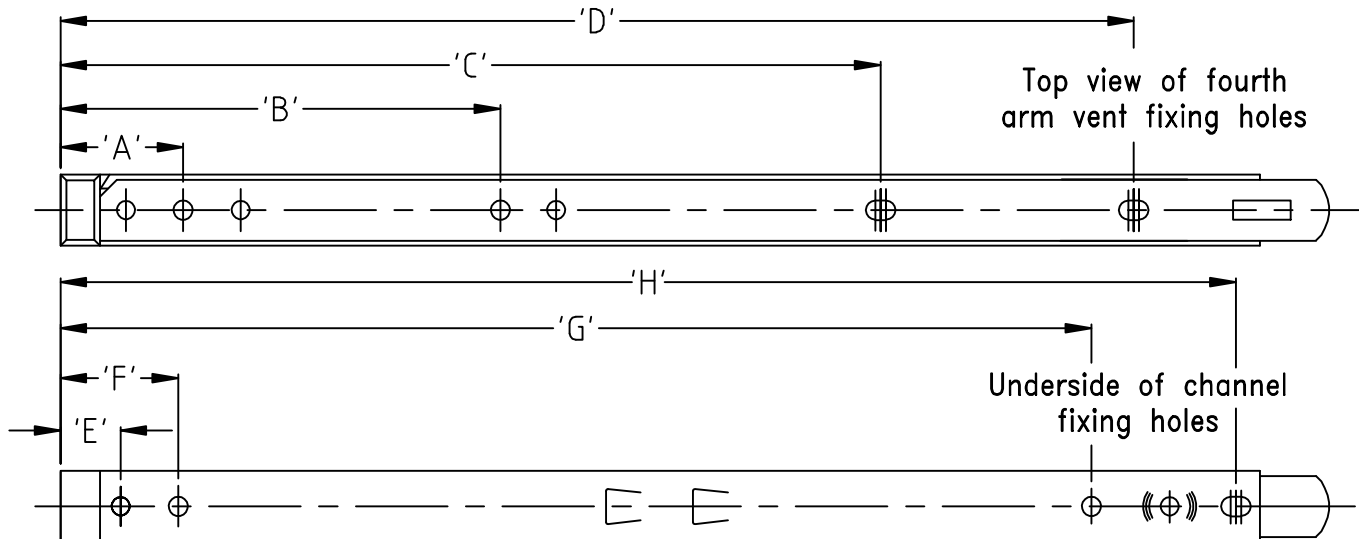


Automatic reset facility on the closure of the window. (Please note as with all safety devices, always test for re-engagement ).

The following fixing devices must be used:  
a) Oval headed fixing screw such as Buildex HH range.  
b) Oval headed pop rivets.

Top view of fourth arm vent fixing holes

Underside of channel fixing holes



			VENT FIXING HOLE DET.				FRAME FIXING HOLE DET.			
HSR201	SIZE	STACK HEIGHT MM	A	B	C	D	E	F	G	H
SIDE HUNG	12"	13/14 & 16/17	32.6	114.8	212.7	279.3	15.5	30.5	269.3	305.7
TOP HUNG	12"	13/14 & 16/17	32.6	114.8	212.7	279.3	15.5	30.5	269.3	305.7

NOTE: FIXING HOLE TOLLERANCE  $\pm 0.5\text{MM}$ , OPENING ANGLE  $\pm 1^\circ$

RECOMMENDED MAXIMUM WINDOW WEIGHTS & SIZES							
	SIZE INS.	SIZE M.M.	WIDTH M.M.	HEIGHT M.M.	WEIGHT Kg.	RESTRICT ANGLE	OPENING ANGLE
HSR201 SIDE HUNG	12"	311	650	1250	20	11°	59°
HSR201 TOP HUNG	12"	311	1200	600	20	11°	59°

QCF177/0

IT IS THE RESPONSIBILITY OF THE WINDOW MANUFACTURER TO ENSURE THAT THE FINISHED WINDOWS MEET ANY REQUIRED SAFETY AND PERFORMANCE SPECIFICATIONS.

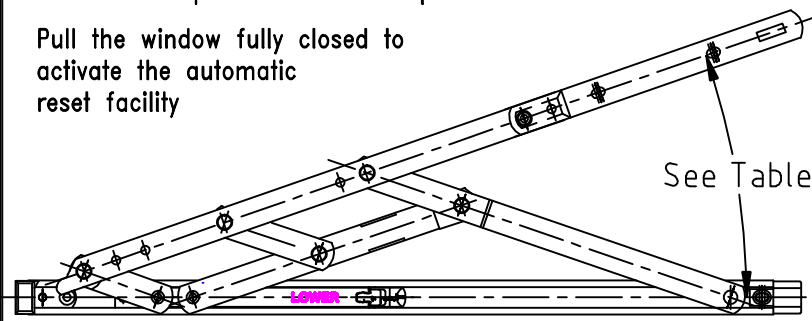
Designed by.  
B.P.M  
Date  
25.02.02

Filename.  
80001139.DWG  
DRG No.  
80001139

ISSUE	E.C.N.	DATE	MOD. BY.
3	6344	11.08.05	B.J.B
4	6424	3.05.07	B.J.B

To release the restrict mechanism, pull the window towards you slightly, gently lift the restrictor catches and push the window open.

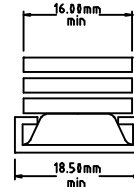
Pull the window fully closed to activate the automatic reset facility



# HSR216(INLINE)

Side Hung + Top Hung

MIN/MAX WORKING CLEARANCE.



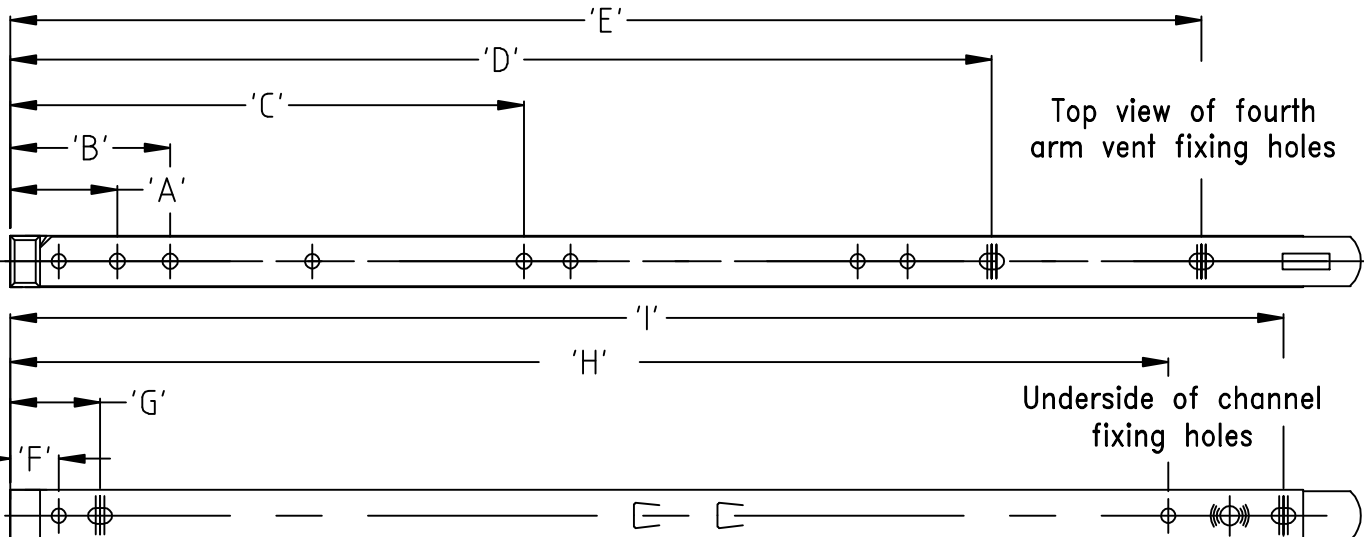
EXAMPLE :  
13.0 mm STACK  
MIN. 13.0 mm  
MAX. 14.0 mm

**ENSURE FIXING SCREWS ARE FLUSH.**



Automatic reset facility on the closure of the window. (Please note as with all safety devices, always test for re-engagement ).

The following fixing devices must be used:  
a) Oval headed fixing screw such as Buildex HH range.  
b) Oval headed pop rivets.



NOTE:- SIDE HUNG STAY SHOWN, 4TH ARMS ALTER ON TOP HUNG STAYS

			VENT ARM FIXING HOLE DETAILS					FRAME FIXING HOLE DETAILS			
HSR216	SIZE	STACK HEIGHT MM	A	B	C	D	E	F	G	H	I
TOP/SIDE HUNG	16"	13/14 & 16/17	36.2	53.0	165.5	314.3	380.9	15.5	30.5	370.7	407.0

NOTE: FIXING HOLE TOLLERANCE  $\pm 0.5\text{MM}$ , OPENING ANGLE  $\pm 1^\circ$

RECOMMENDED MAXIMUM WINDOW WEIGHTS & SIZES							
	SIZE INS.	SIZE M.M.	WIDTH M.M.	HEIGHT M.M.	WEIGHT Kg.	RESTRICT ANGLE	OPENING ANGLE
HSR216 SIDE HUNG	16"	406	700	1300	24	10°	48°
HSR216 TOP HUNG	16"	406	1200	750	24	10°	48°

QCF177/0

IT IS THE RESPONSIBILITY OF THE WINDOW MANUFACTURER TO ENSURE THAT THE FINISHED WINDOWS MEET ANY REQUIRED SAFETY AND PERFORMANCE SPECIFICATIONS.

Designed by.  
B.P.M  
Date  
25.02.02

Filename.  
80001140.DWG  
DRG No.  
80001140