

# Xpert Hand Saws

Taking care of all your toolbox essentials!

**WINDOW  
WARE**

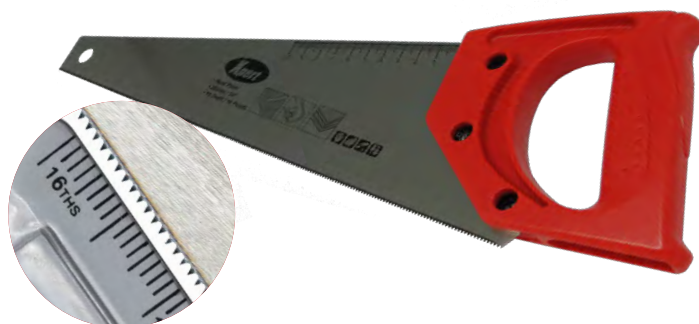
*We've got it*

## Toolbox Saw - SAW90004

This compact yet capable saw from Xpert is small and light enough to fit into most toolboxes, so it's perfect to have on stand-by when you need to make small, more intricate cuts in plastic building essentials including PVCu window trims, sills and piping. Fine teeth and a stay-sharp blade ensure cuts that are clean, controlled and true, time and time again. And if you haven't got a tape measure handy, the ruler printed along the top edge of the saw provides a convenient, quick-measuring solution for lengths up to 100mm.

### Features:

- Hard-point teeth stay sharper for longer
- 360mm / 14" long blade
- 0.09mm thick blade
- Fine 16 ppi blade
- Light yet sturdy plastic handle with steel core
- Store safely out of reach using handy hanging hole
- Ruler printed on top saw edge for instant measuring
- Great for cutting cleanly through PVCu trims, sills and plastic pipe



## PVCu Saw - SAW40001

This Xpert PVCu saw gives you the extra edge when cutting all kinds of larger plastic building products. Whether you need to cut fascia, soffits, piping or plastic window trim, the specially-designed generous length, stay-sharp 14 ppi fine blade won't jump or chip to deliver a Smooth, straight and clean with minimal burring. And if you haven't got a tape measure handy, the ruler printed along the top edge of the saw provides a convenient, quick-measuring solution for lengths up to 350mm.

### Features:

- Hard-point teeth stay sharper for longer
- 508mm / 20" long blade
- 14 ppi (points per teeth)
- Rubberised handle gives greater comfort and a sure grip
- Cuts cleanly and evenly through PVCu, fascia, soffits & trims
- Ruler printed on top saw edge for instant measuring



## Builders Saw - SAW40002

The long, dual-action blade and large teeth on this Xpert Builders saw waste no time cutting through wood, plywood, chipboard, tongue & groove, in fact, virtually any timber building materials you might use. Cutting comfort and safety is assured thanks to a rubberised, ergonomic handle, while the ruler printed along the top edge of the saw provides a convenient, quick-measuring solution for lengths up to 400mm when you don't have your tape measure to hand.

### Features:

- Hard-point teeth stay sharper for longer
- 560mm / 22" long blade
- 8 ppi (points per teeth)
- Rubberised handle gives greater comfort and a sure grip
- Efficient, dual action cutting speeds through all types of timber building products
- Ruler printed on top saw edge for instant measuring

