

Conexis® L1 Manual

The Secure, Keyless
Smart Door Lock.



ASSA ABLOY
An ASSA ABLOY Group brand

T | 01234 242724
W | www.windowware.co.uk

The smarter way to protect your home.

Discover Our Range of Products.

Yale® Connected

Secure, monitor and control your home with a range of smart security devices from Yale.

Whether it's a Smart Door Lock, an Alarm or CCTV system, Yale Smart Living products put you in control of your home security.

www.yale.co.uk/smart-living



The smarter way to protect your home.

Thank you for choosing the Yale Conexis® L1 Smart Door Lock. This simple to install product has been designed with the user in mind. Please read this manual completely before using the Yale Conexis® L1 Smart Door Lock.

Contents

Conexis® L1 Smart Door Lock 4

Inside The Box 5

Remove Existing Handle And Cylinder 6

Measuring Your Door 7

Installation Guide 8-14

Initial Pairing Of Key Card/Tag 15

Installation Checklist 16

Unlock With Cards/Tags 17

Yale Lock App 18

Create Mobile Key Account 19

Adding Cards/Tags Via App 20

Unlock With Yale App 21

Locking The Conexis® L1 Smart Door Lock 22

Battery Indicator 23

Pairing With A Third Party Gateway 24

Factory Reset 25

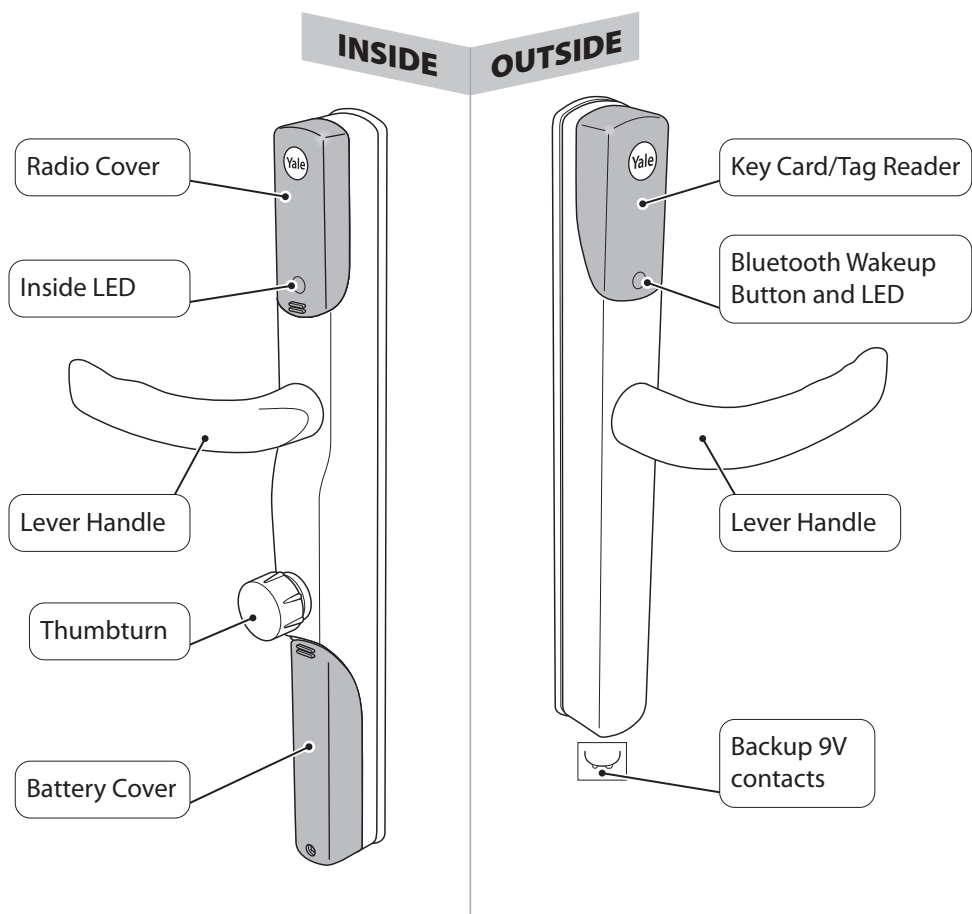
For more information on this product
and Yale Smart Living Range visit
www.yale.co.uk/smart-living
Consumer Support: info@yale.co.uk
Tel: 01902 364606



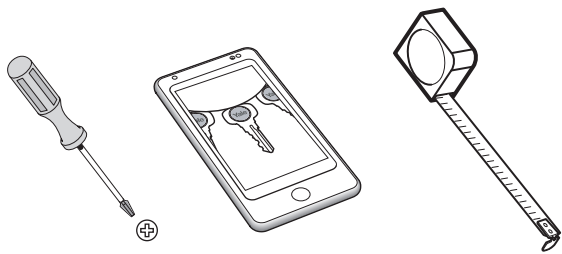
The 2 year guarantee for this product is active from the date of purchase (A copy of this guarantee is available on our website).

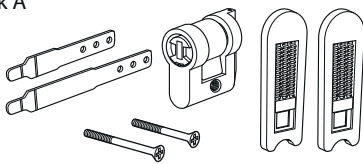
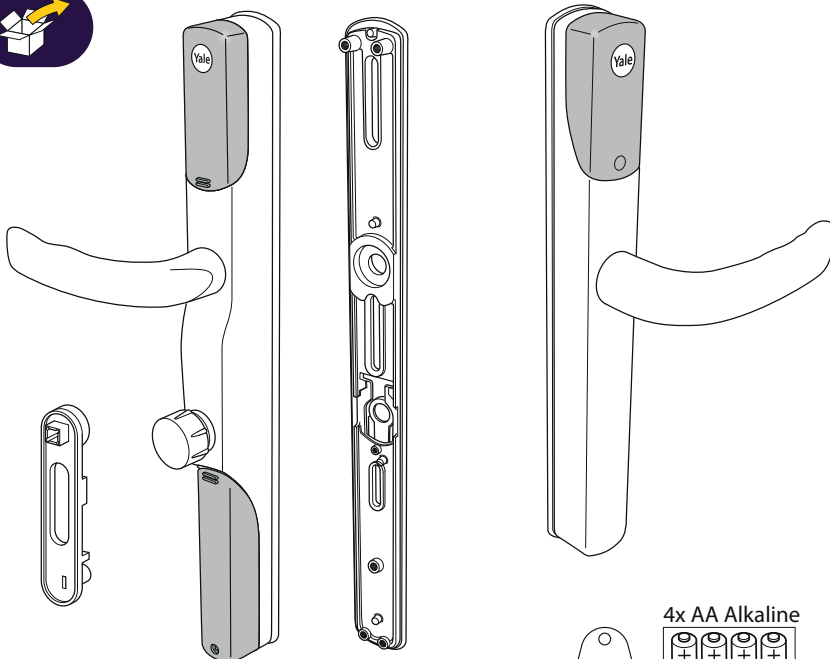
Hereby, ASSA ABLOY UK Ltd declares that the Conexis® L1 Smart Door Lock is in compliance with Directive 2014/53/EU.
The full text of the EU declaration of conformity is available at the following internet address:
www.yale.co.uk/declaration-of-conformity

Conexis® L1 Smart Door Lock.



Tools Required





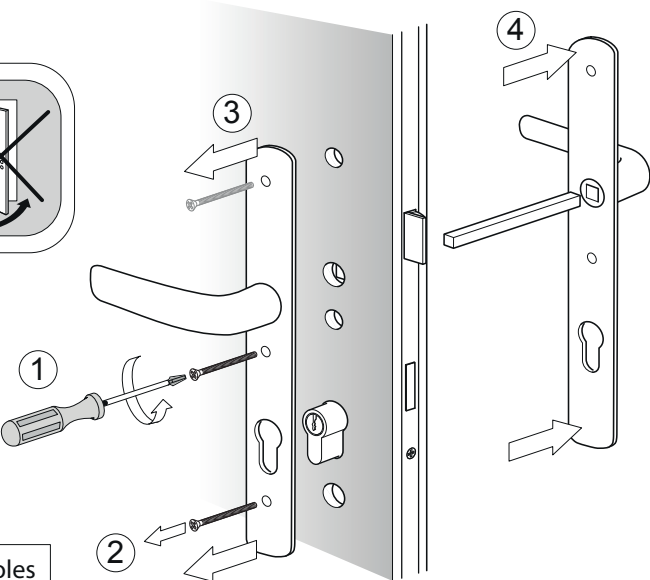
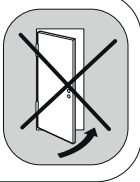
The diagram illustrates the assembly of a beam. A long horizontal beam is shown with a dimension line indicating its length as 160mm. Above the beam, three shorter rods are shown, each with a dimension line indicating its length as 70mm. The rods are positioned as if they are about to be inserted into the beam.

Diagram illustrating the dimensions of the bars. Three parallel bars are shown, each with a length of 80mm. A fourth bar is shown below them, with a length of 170mm.

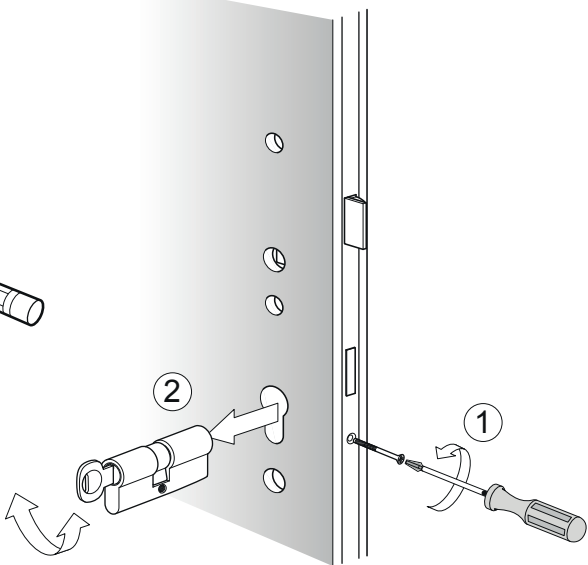
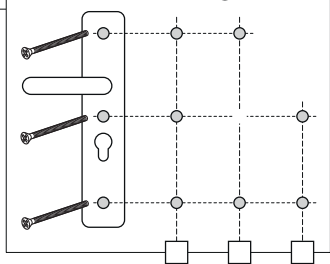
Remove Existing Handle And Cylinder



Do not close door until installation is complete.

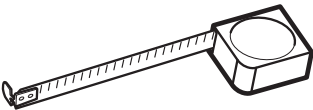


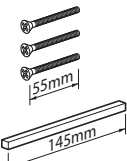
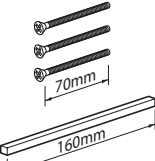
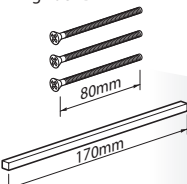
Make a note of which holes screws went through



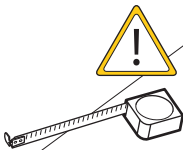
Measuring Your Door.

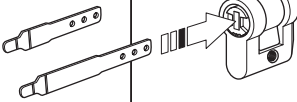
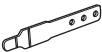

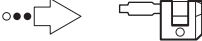



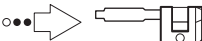
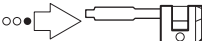
Please measure the thickness of the door and the distance between the centre of the lock and the inside of the door to select the correct fixing pack and tailbar.



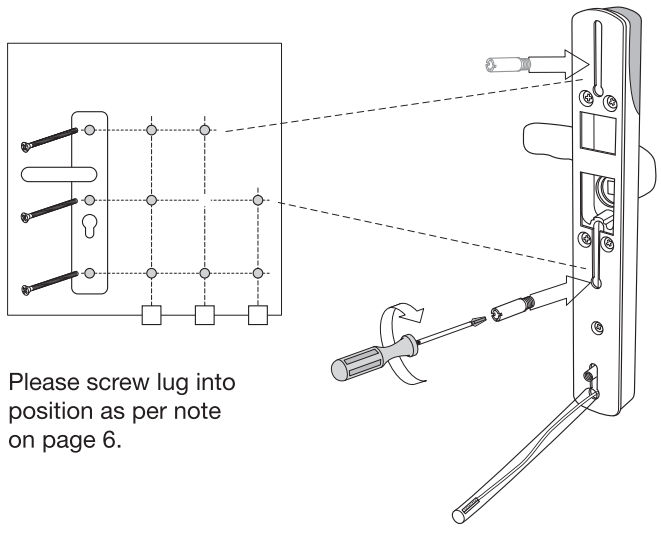
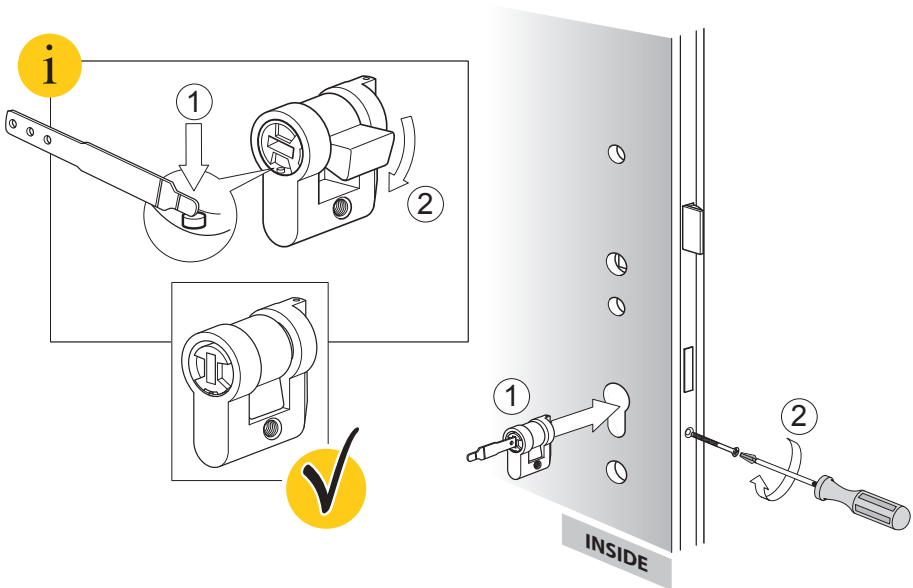
<p>Fixing Pack B</p>  <p>55mm</p> <p>145mm</p> <p>Door thickness 44-50mm</p>	<p>Fixing Pack C</p>  <p>70mm</p> <p>160mm</p> <p>Door thickness 58-65mm</p>	<p>Fixing Pack D</p>  <p>80mm</p> <p>170mm</p> <p>Door thickness 70mm</p>
---	---	--

INSIDE



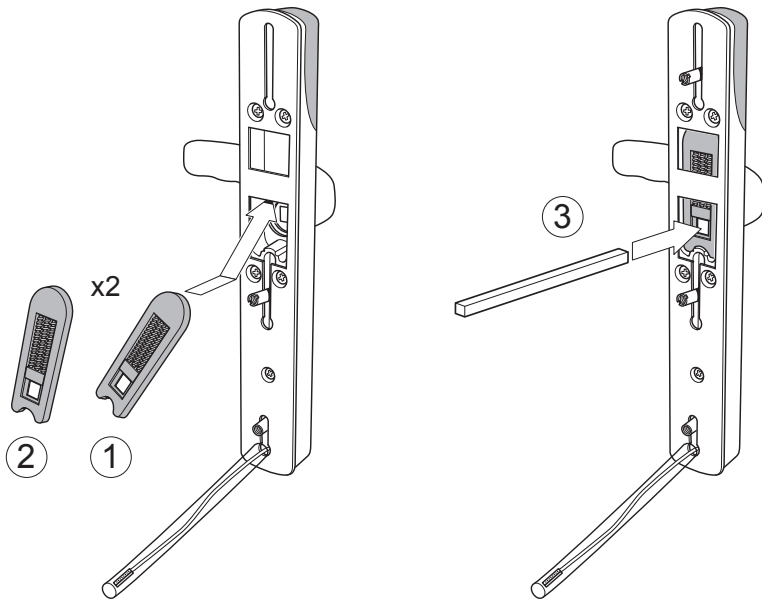
		
21mm - 26mm		
26mm - 31mm		
31mm - 36mm		
36mm - 41mm		
41mm - 46mm		
46mm - 51mm		
	<p>Short Tailbar</p>	
	<p>Long Tailbar</p>	

Installation Guide.

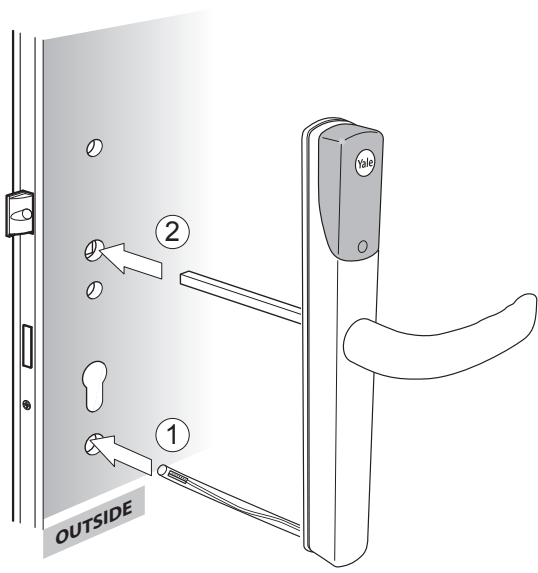


Please screw lug into position as per note on page 6.

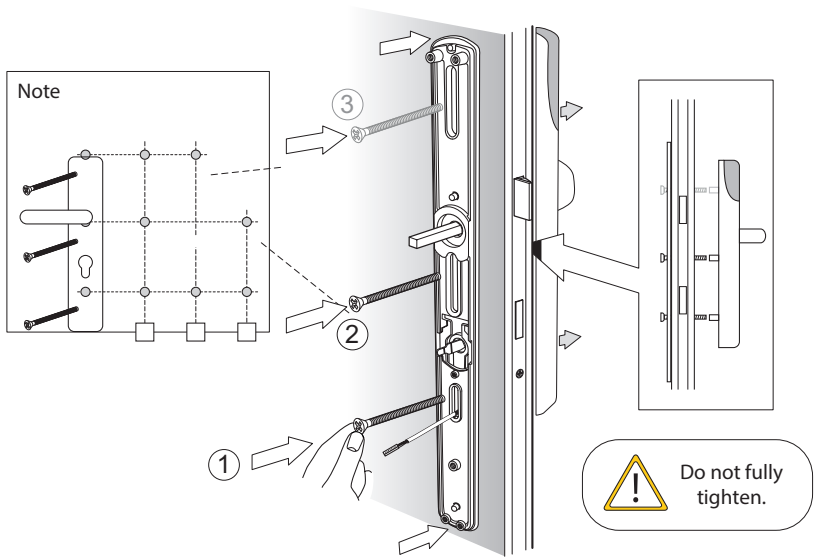
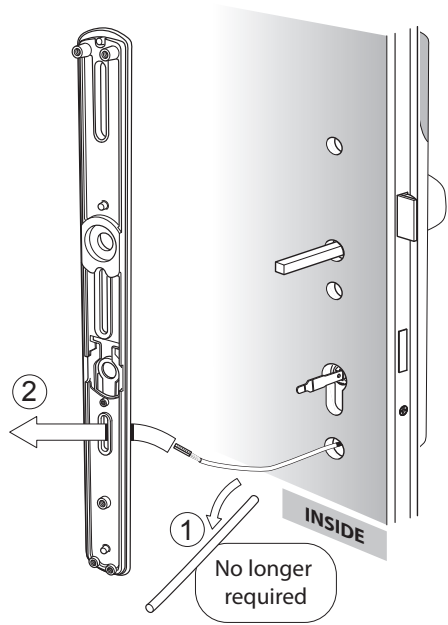
Installation Guide.



Slide the lug up or down to align with the holes in the door.

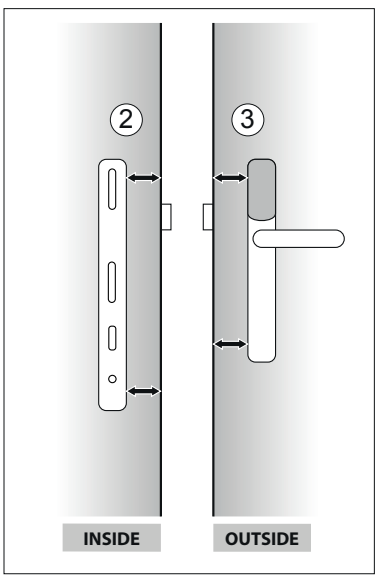
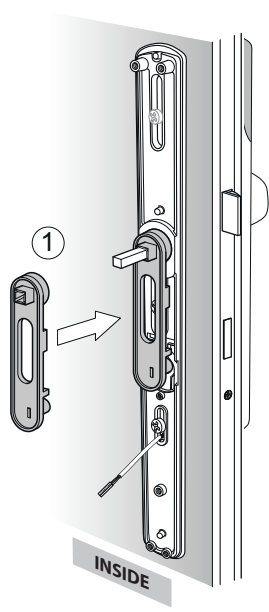


Installation Guide.

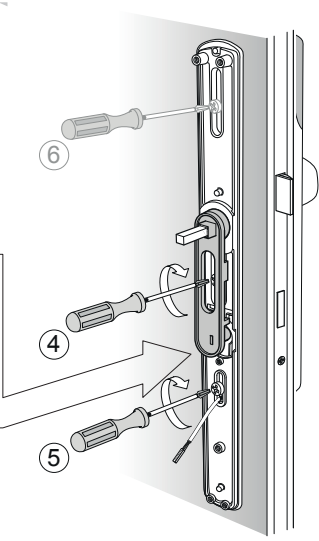


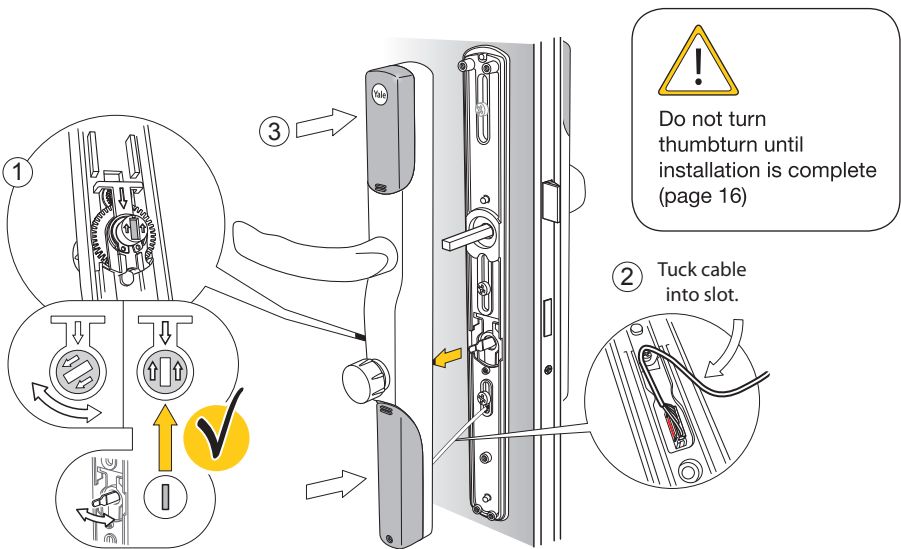
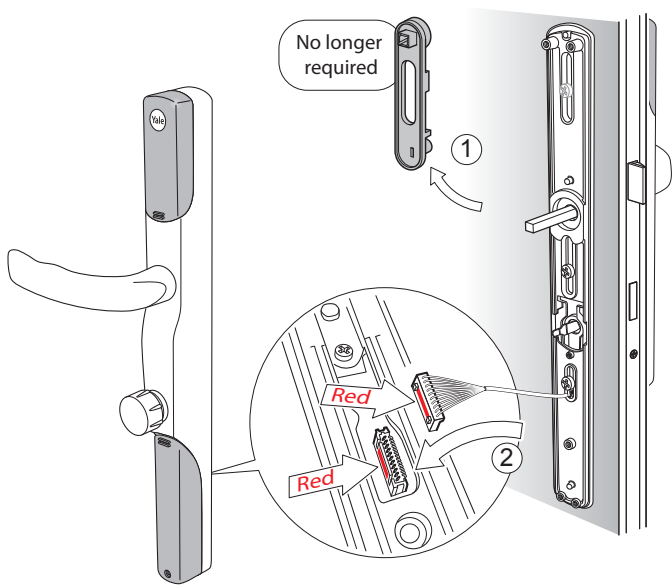


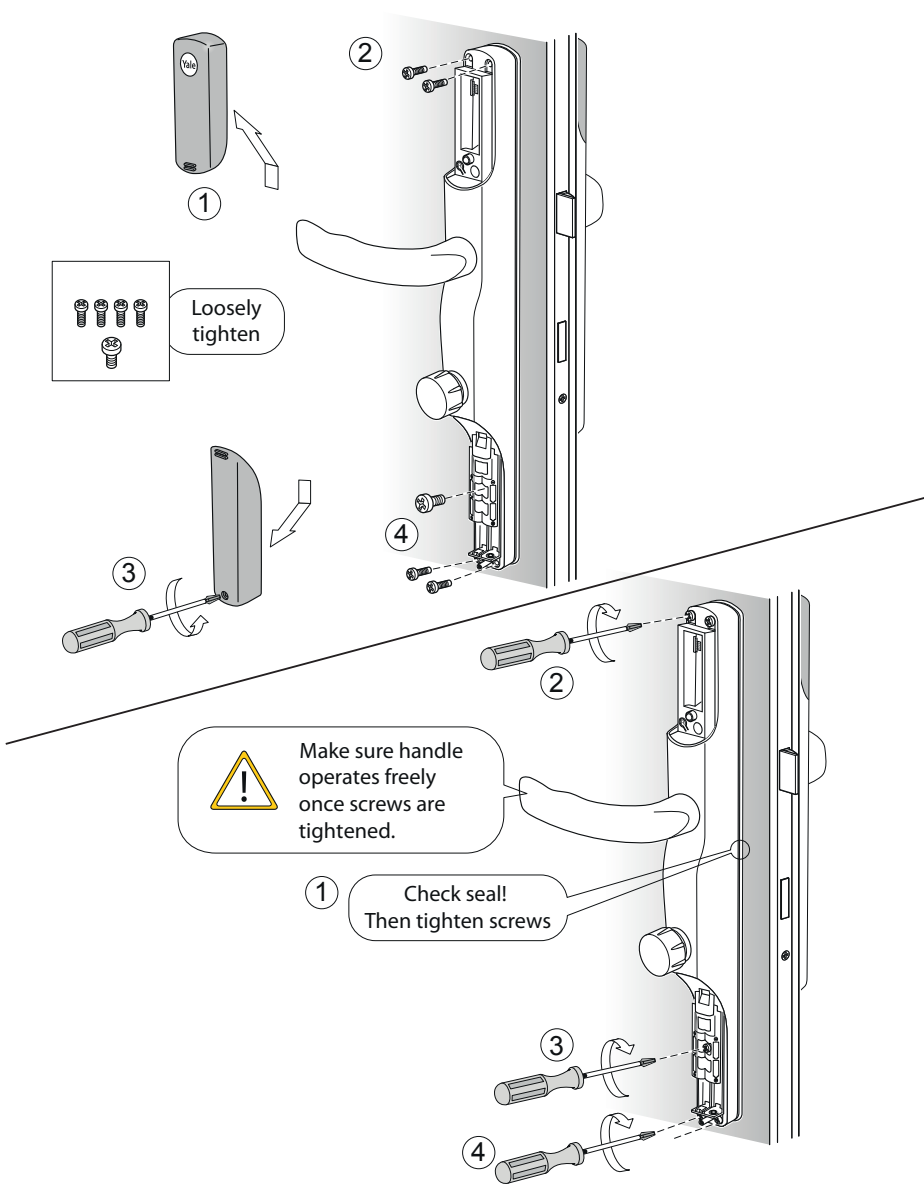
Make sure handle is parallel to door on both sides.



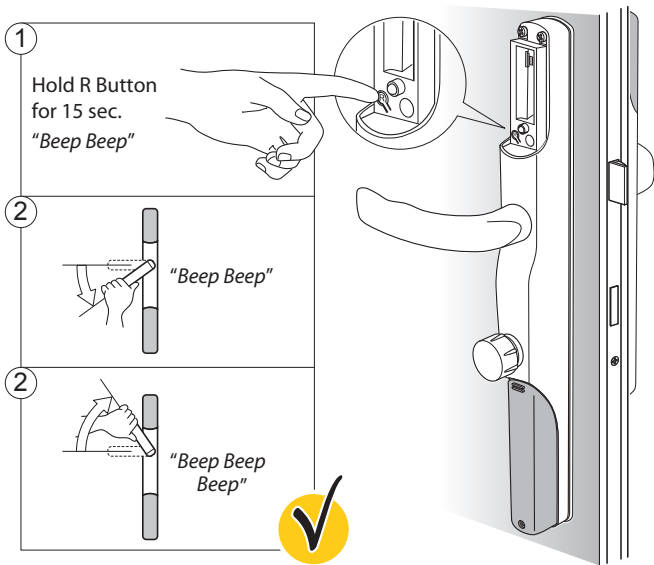
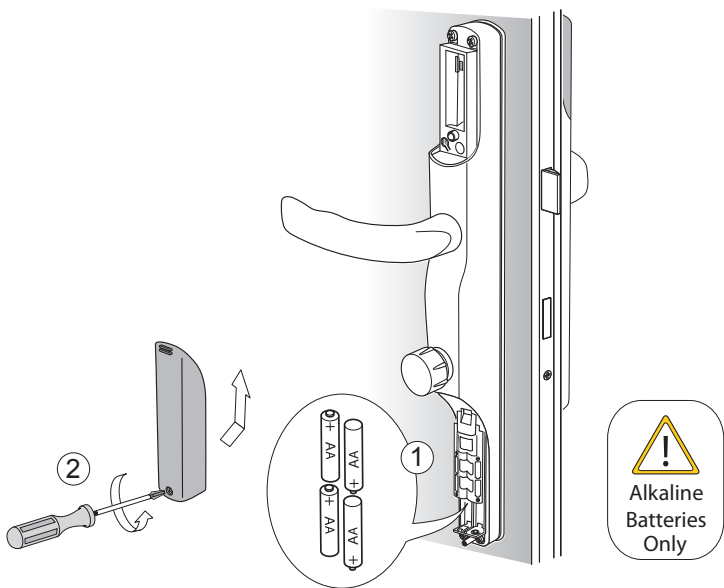
Please ensure that alignment tool is flat against the door as screws are tightened.







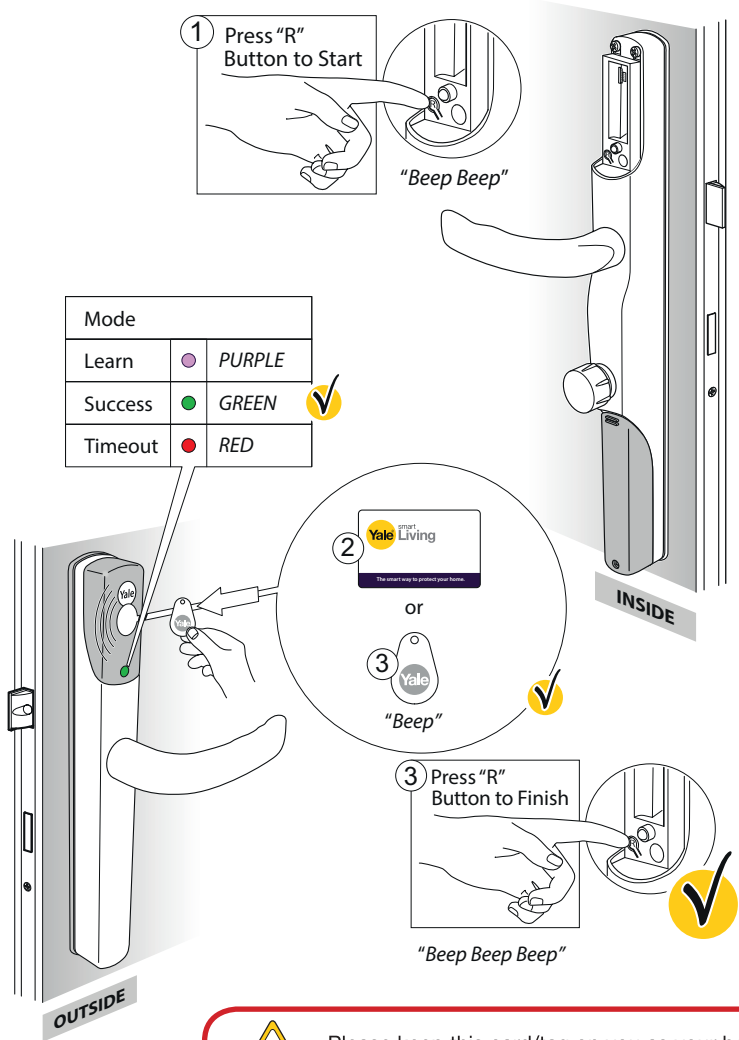
Installation Guide.



Initial Pairing Of Key Card/Tag.



Initial pairing mode is designed to allow you to pair a Card or Tag before you connect a smartphone to your lock. To add a Card/Tag through your smartphone please follow instructions on “Adding Cards/Tags Via App” section. Adding Cards/Tags in this way will delete any previously added Cards/Tags. This feature will be disabled once the lock is paired with the Yale App.



Please keep this card/tag on you as your backup credential at all times when leaving the house.

Installation Checklist.

Before shutting your door in frame, please test the following things...

- A** While the door is open, lift the lever handle to lock. Make sure the motor operates smoothly.

☐

- B** Test to make sure the lever handle cannot be pushed down.

☐

- C** Push the thumbturn in on the inside handle and turn 180 degrees to unlock the door.

☐

- D** Push the lever handle down and make sure it returns by itself.

☐

- E** Lift the lever handle to lock again.

☐

- F** Tap one of the paired Cards/Tags on the outside handle under the Yale logo. Make sure it unlocks and the lever handle can be pushed down.

☐

Your installation is now complete.

If you have issues with any of the above, please contact:

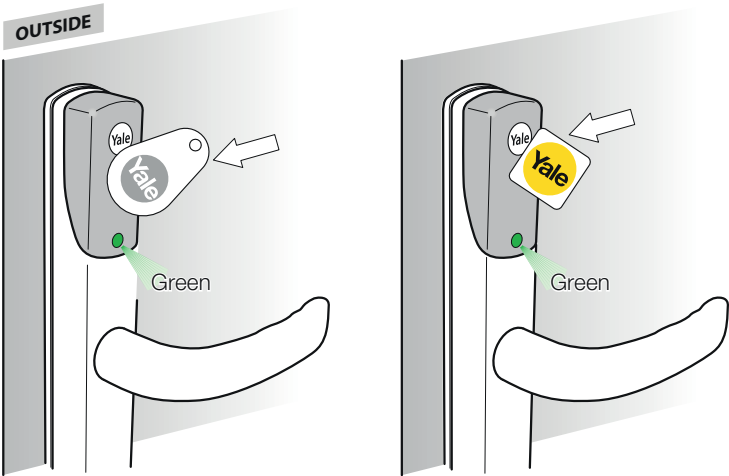
Consumer Support: info@yale.co.uk **Tel:** 01902 364606

Unlock With Cards/Tags.

1



2



3



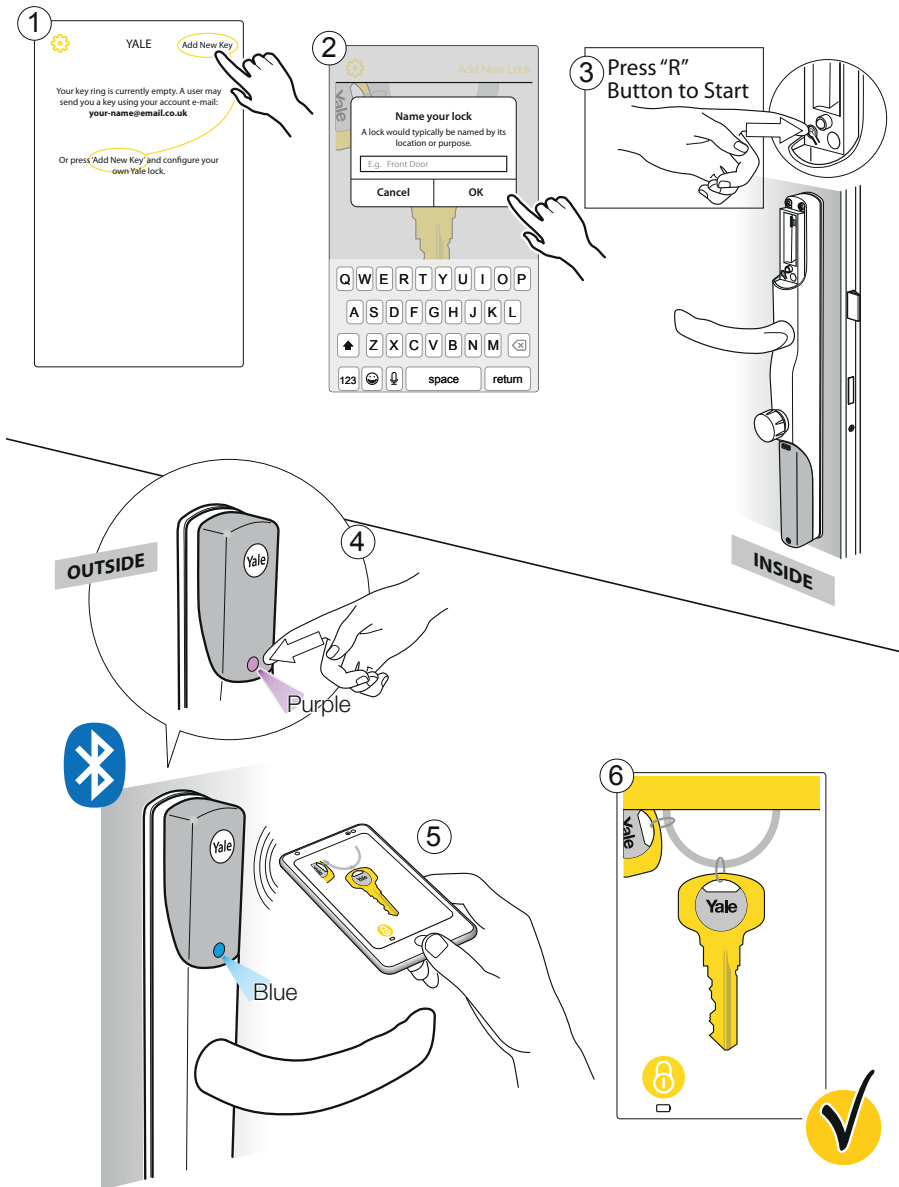
1 Download App



2 Create Account

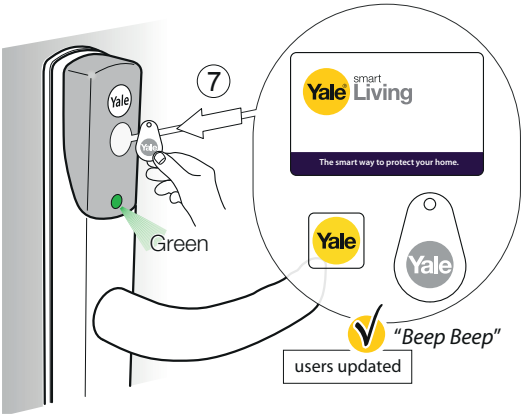
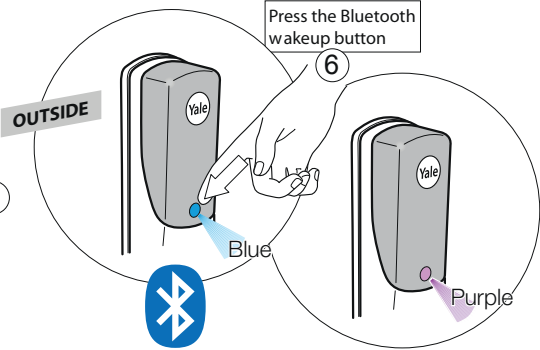
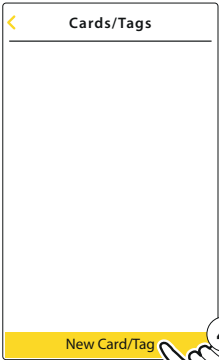
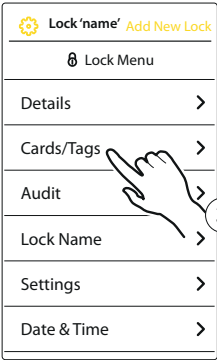
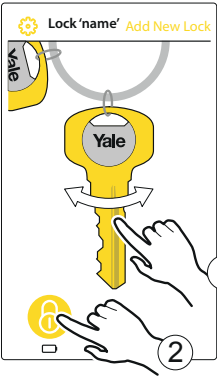
A diagram showing the account creation process. A smartphone displays the app interface, with an arrow pointing to a "Create Account" button in the "Yale Living Login" form. The "Create Account" button is highlighted with a white arrow. The "Yale Living Login" form has fields for "E-mail" and "Password", and buttons for "Login", "Password Reset", "Create Account", and "Send Feedback". The "Yale Living User Registration" form has fields for "First name", "Last name", "E-mail", "Password", "Confirm Password", "Questions" (with a sub-field "What time of the day were you born? (hh:mm)"), and "Answer". A large yellow checkmark icon is at the bottom right.

Create Mobile Key.



NOTE: Once a mobile key has been created you can send it by tapping on the key and selecting "Manage Users".

Adding Cards/Tags Via App.



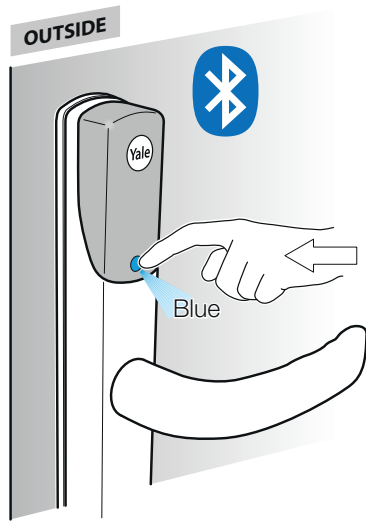
Unlock With Yale App.

Your Smartphone must already have a mobile key for the lock to use this feature. If you're setting up the lock for the first time please follow instructions on page 19, or the lock owner can send you a key.

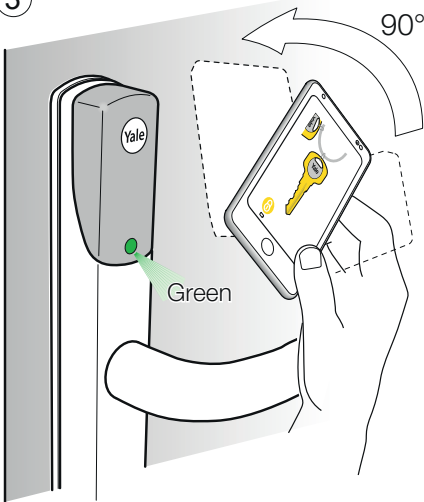
1



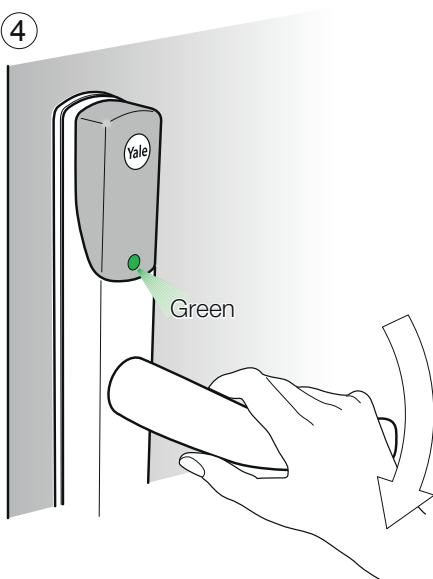
2



3



4



Twist the phone 90° and back up to use the mobile key.

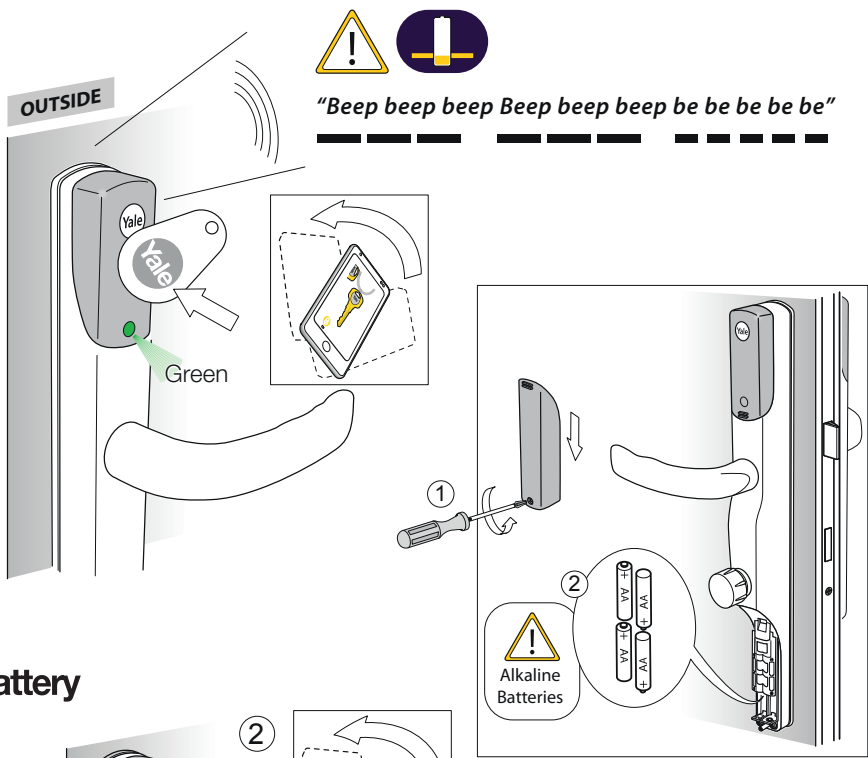


Locking The Conexis® L1 Smart Door Lock.

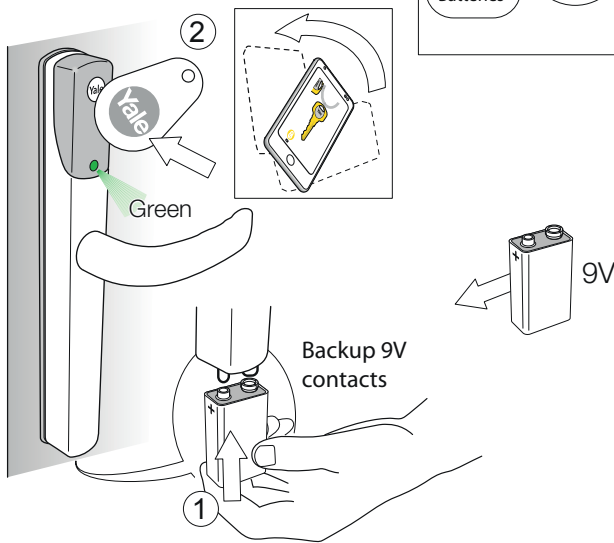


Battery Indicator.

Low Battery

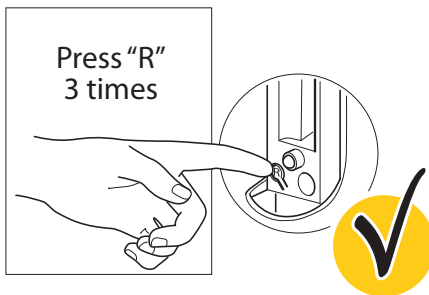
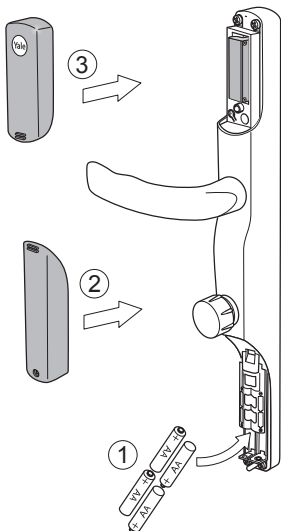
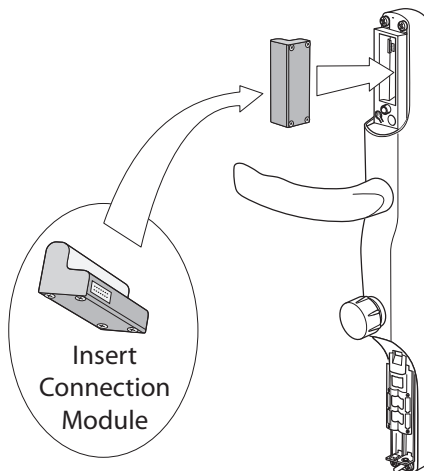
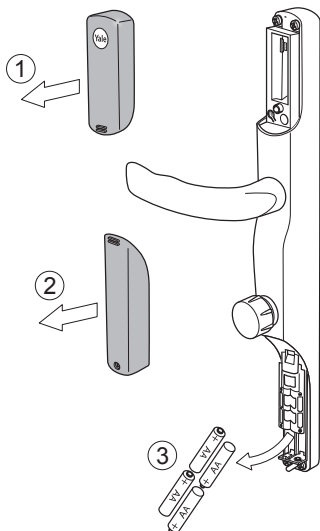


No Battery



Pairing With A Third Party Gateway.

Connecting to a home automation system is a two-way process and may require the compatible home automation system to be configured to look for a new device. Please consult the manual that came with the system for more information.

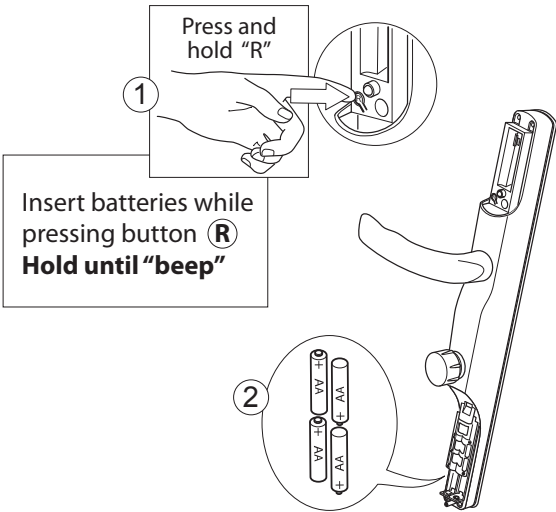
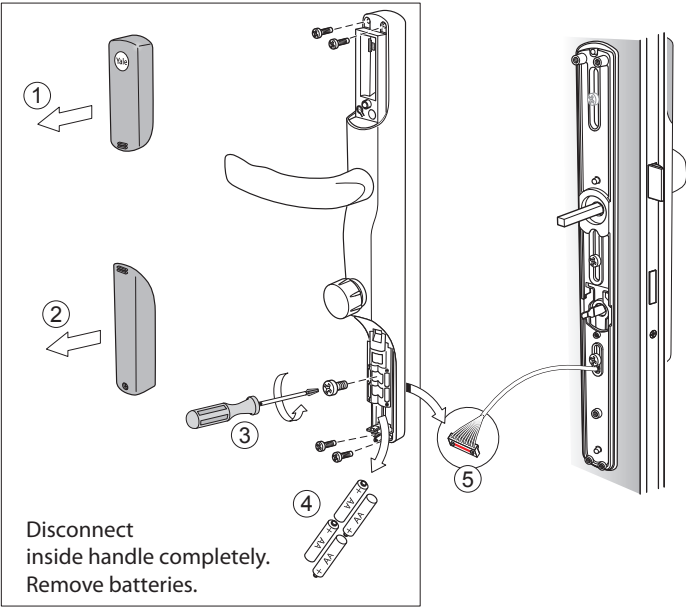


Removing The Lock From A System

The lock may need to be removed from a home automation system before being added to a new system. To do this, please carry out the following:

1. Put the existing system into 'Device Exclusion Mode'
2. Press "R" Button 3 times within 1.5 seconds

Factory Reset.



[illegible]

[illegible]



T | 01234 242724
W | www.windowware.co.uk

THE YALE BRAND, with its unparalleled global reach and range of products, reassures more people in more countries than any other consumer locking solution.

THE ASSA ABLOY GROUP is the world's leading manufacturer and supplier of locking solutions, dedicated to satisfying end-user needs for security, safety and convenience.



YaleUK



YaleSecurity



YaleSecurityUK

Issue No. 1A

ASSA ABLOY

An ASSA ABLOY Group brand

The smarter way to protect your home.