

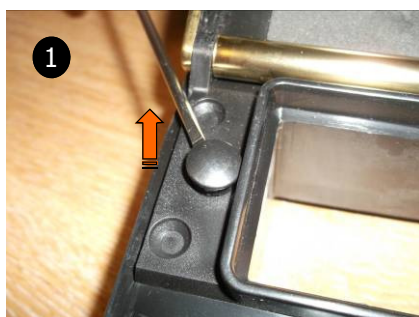
Trojan Unicorn 12" letterplate Fitting Details

Part number: LBX8*****
Description: Trojan Unicorn 12" letterplate
Boxed quantity: 10

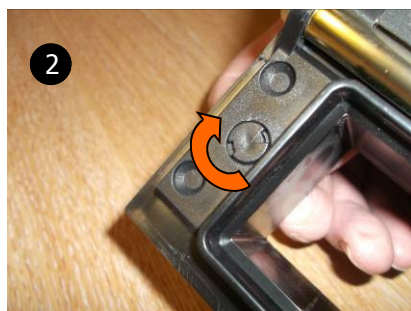


Fitting - No Boss:

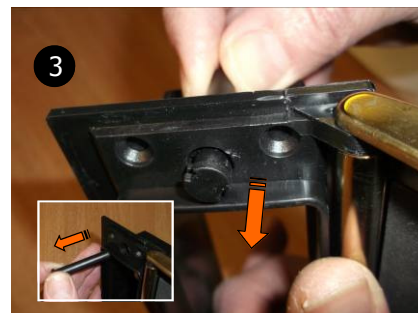
Remove the boss as follows:



Lift caps off as shown (both ends) It may be helpful to use a small bladed screw driver



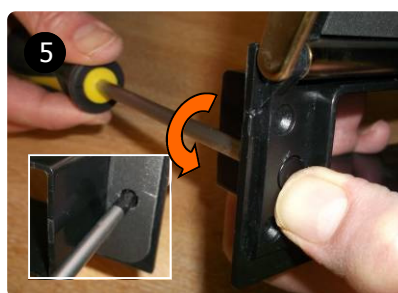
Rotate the boss from the back about 1/8th turn anti clockwise using the fingers to disengage



Push the boss through to remove



Insert blanking caps from screw pack into boss location hole (both ends)



Holding the cap in place, using a cross head screw driver from the back, rotate about 1/8th turn clockwise to secure



Blanking cap correctly fitted

Trojan Unicorn 12" letterplate Fitting Details

Part number: LBX8*****

Description: Trojan Unicorn 12" letterplate

Boxed quantity: 10



Fitting - With Boss:

Fitting Letterplate:



Insert the inner half (with brushes) into the aperture from the inside.



Insert the outer half into the aperture from the outside and hold in place while screws are inserted from the inside



Select the correct screws:
Panels and composite doors use 30mm screws
Mid rails use 60mm screws



Insert screws into boss location hole (both ends). Ensure that screw locates into boss. Screw must not be over tightened



Screw must not be over tightened. Recommended torque setting 3N/m Refer to drill manufacturers data for setting.



Screws correctly fitted