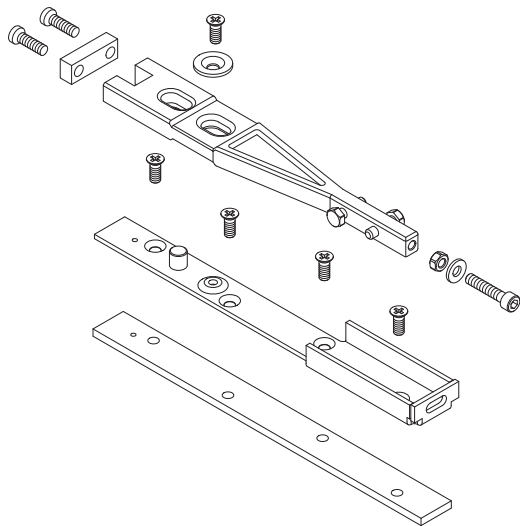
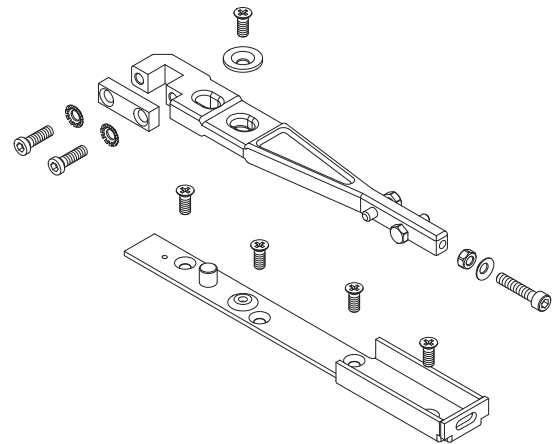
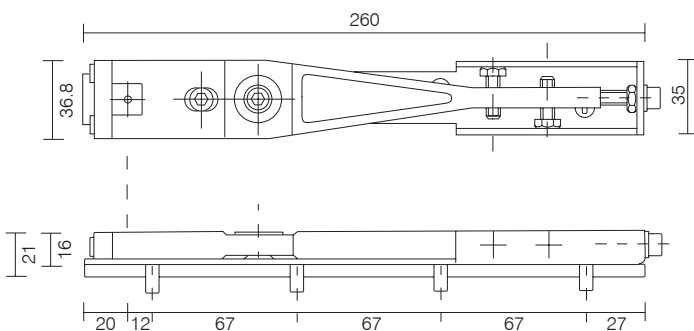


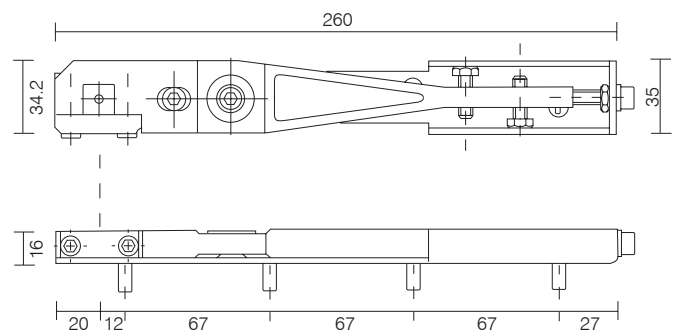
SCALE	NTS @A4
DATE	AUGUST 2017
For scaled technical or CAD drawings, please contact our Sales team	

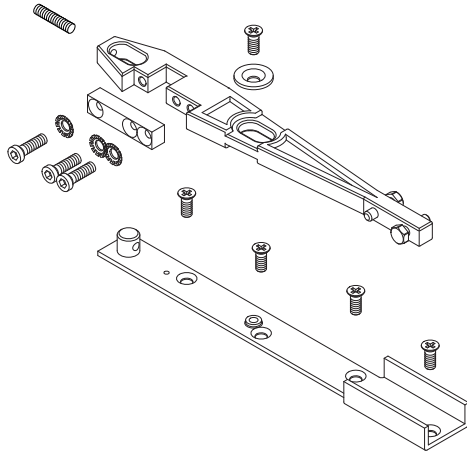


End load top arm & spacer bar ATC880015
For use on end loading and anti-finger trap doors.
When using standard door rails spacer bar is not required.

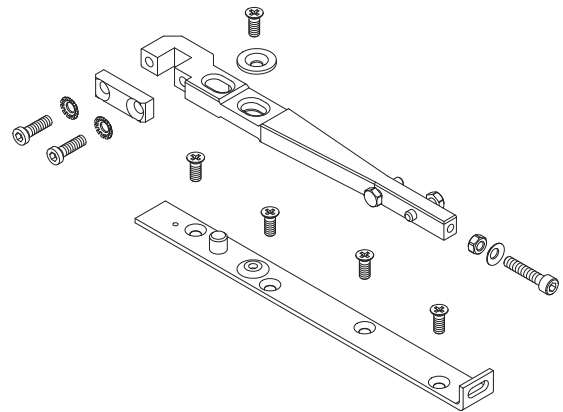
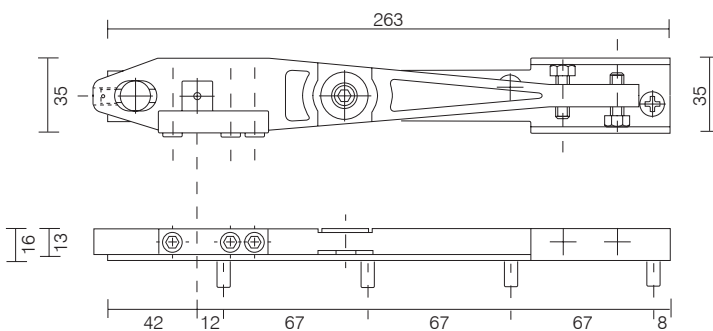


Std. top side load arm ATC880013
For use on side loading and anti-finger trap doors.





Top side load arm ATC880013T
For use on side loading doors.
(Arm supplied with standard transom closer kit)



Universal arm ATC880001
For use on side loading and armour glass doors

