

MAXIMUM SECURITY

hardened steel bolt, zinc plated with anti-rattle sleeve.

18mm bolt stroke.

7mm zinc plated steel rod with fully threaded length, easily adapted for non-standard door installations.

Lengths available 305mm (12 inch).

"Centre Punch" tip to mark centre of keep.

Die cast zinc alloy body mechanism.

Fixing holes tapped M5.

Fixings included.

Deep finger recess and large lever for ease of operation.

Corners 2.5mm radius for easy matching of cut out.

FINISHES AVAILABLE

Silver - Satin chrome.

The following are Special Order

Mill finish - for customers own finish.

Bronze - Powder coat.

White - Powder coat.

Black - Powder coat.

PRODUCT CODES			
LENGTH	FINISH	FLAT	RADIUS
305mm (12 inch)	SILVER	AFB620112F	AFB620112R
	Following - Special Order		
	MILL	62.00F12	62.00R12
	BRONZE	62.02F12	62.02R12
	WHITE	62.01F12	62.01R12
	BLACK	62.02F12	62.02R12
SHIPPING WEIGHT 2.52Kg. PER 10			

Bolt guide by door manufacturer.

Floor Socket Keep

Sprung loaded, dust resistant, satin chrome finish.

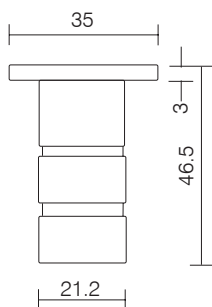
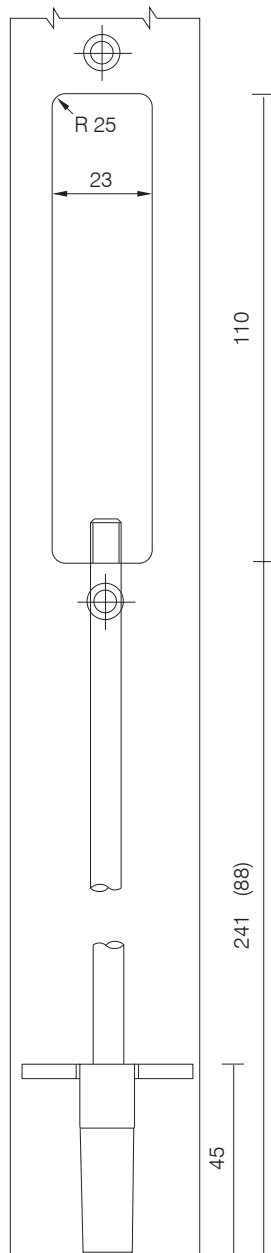
PRODUCT CODE	SOCKET KEEP
	AFB62035
SHIPPING WEIGHT 2.52Kg. PER 10	

GUARANTEE

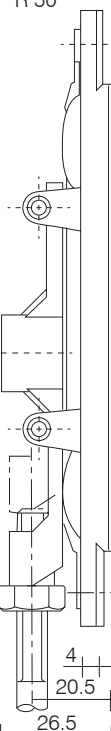
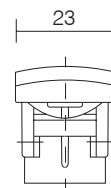
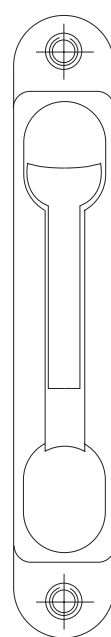
AXIM FLUSH BOLTS ARE GUARANTEED FOR 30 MONTHS FROM THE DATE OF MANUFACTURE AGAINST DEFECT IN MATERIAL AND WORKMANSHIP. THIS GUARANTEE IS VOID IF THE PRODUCT HAS BEEN INCORRECTLY INSTALLED OR DAMAGED IN USE. CLAIMS FOR DAMAGE INCURRED OR WORK DONE THEREON WILL NOT BE ACCEPTED.

AXIM RESERVE THE RIGHT TO UPDATE ITS PRODUCT SPECIFICATIONS WITHOUT PRIOR NOTICE.

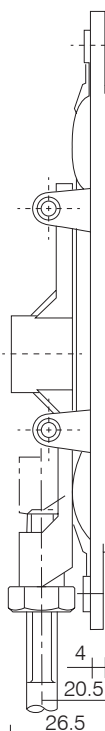
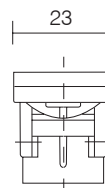
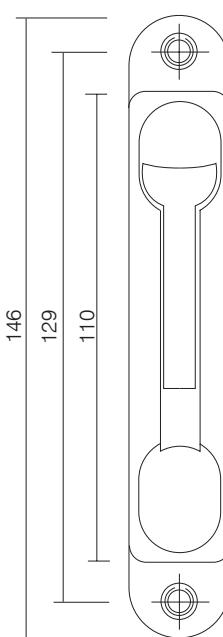
DOOR PREPARATION



RADIUSED FACED



FLAT FACED



SCALE

NTS @A4

DATE

JULY 2017

For scaled technical or CAD drawings,
please contact our Sales team