



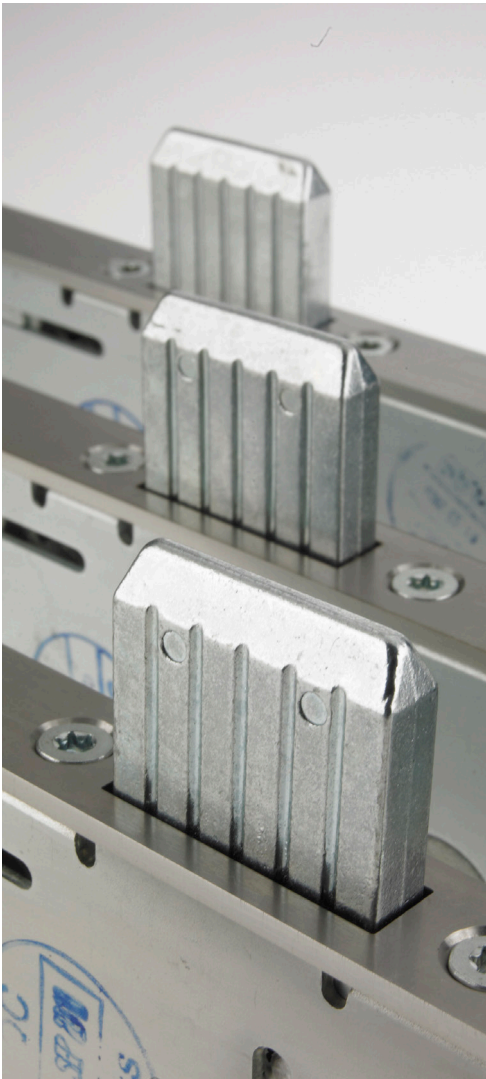
High performance multipoint door locking systems

AVANTIS®
More than manufacturing

available from

**WINDOW
WARE**
We've got it

Products		Page No.
The Avantis 650 Series	PVCu	3
The Avantis 550 Series	PVCu	4 - 5
The Avantis 750 Series	Timb/Comp	6
Set For Smart, Kubu		7



ABOUT AVANTIS HARDWARE LTD

Avantis Hardware Ltd has been pushing boundaries and meeting hardware needs ever since the company was set up in 2006 by CEO Mark Bromley – a leading figure in the door and window industry.

Armed with advanced levels of engineering design, technical acumen and industry experience, they've become masters at solving common problems for door and window manufacturers and installers across the UK.

GREAT PRODUCTS, SUPERIOR SERVICE

When you source your Avantis Hardware through Window Ware, you don't just get high-quality products. You'll also enjoy an impressive array of valuable support services and extra benefits you'd be hard-pressed to find anywhere else. This unique Window Ware difference gives you access to...



Dependable deliveries with a 97% OTIF



Dedicated local sales support



Regular order updates & delivery tracking



Flexible ordering & payments



Fast response to calls & emails



Non-stocked special-order service



One-stop choice of 6500+ products



Over 30-years' expertise on tap

The Avantis 650 Series 35mm Multipoint PVCu Door Lock

PRODUCT INFORMATION

The Avantis 650 door lock has been rigorously tested to ensure unbeatable weatherproofing worthy of meeting current British Standard BS6375, as well as superior security performance that's earned both the Secured by Design stamp of approval and PAS 24 compliance. Designed to last and backed by a 10-year mechanical guarantee, this proven lock provides robust, trouble-free operation perfectly suited to residential properties.

- 16mm faceplate, 35mm backset
- PZ92/62mm dual follower centre case
- Sash rebates: Min. 1852mm (1688mm with reduced handle height). Max. 2200mm
- Class-leading compression: 25mm direct drive centre bolt & optional roller cams
- Accredited protection: large, strong security hooks
- Profile-specific fully adjustable one-piece keeps for simple installation
- Suitable for PVCu doors

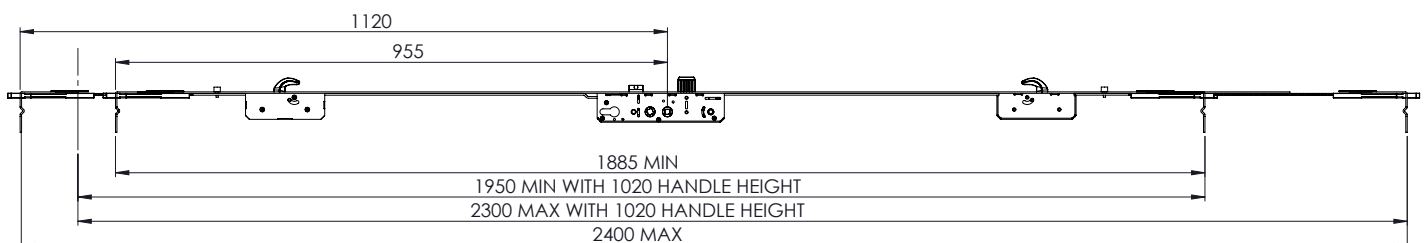


GUARANTEES AND CERTIFICATIONS

- Tested to PAS24 & BS6375
- Secured by Design accredited
- Corrosion-resistant to EN1670: grade 4
- Tested over 50,000 cycles with a 10-year mechanical guarantee



TECHNICAL DRAWINGS

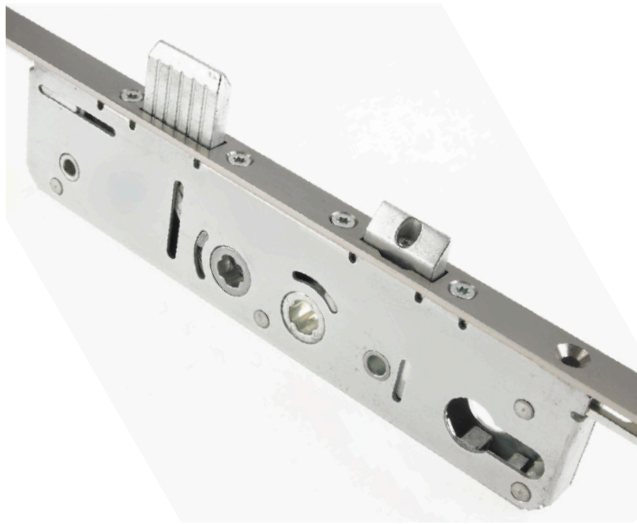


PART NUMBERS

DESCRIPTION	CENTRE CASE	CENTRES	BACKSET	SPINDLE	HOOK	ROLLER	FACEPLATE	EXTENDABLE	PART CODE
650 Series Door Lock	Latch & Deadbolt	92/62mm	35mm	Twin	2	2	16 x 2200mm Square End	N	AVT165001
650 Series Door Lock	Latch & Deadbolt	92/62mm	35mm	Twin	2	2	16 x 2200mm Square End	Y	AVT165001S

The Avantis 550 Series 35mm PVCu French Door Lock Master & Slave

PRODUCT INFORMATION



Looking for a super-secure French door lock that's designed to last? The Avantis 550 series multi-point lock offers some of the strongest SBD-accredited and PAS-24 approved reinforcements for double-door sets in the industry. Large opposing chamfered security hooks, a unique triangulated 25mm deep throw centre deadbolt, optional roller cams and strong, laminated high-security shootbolts all add up to even, weathertight compression and ultimate protection against forced entry.

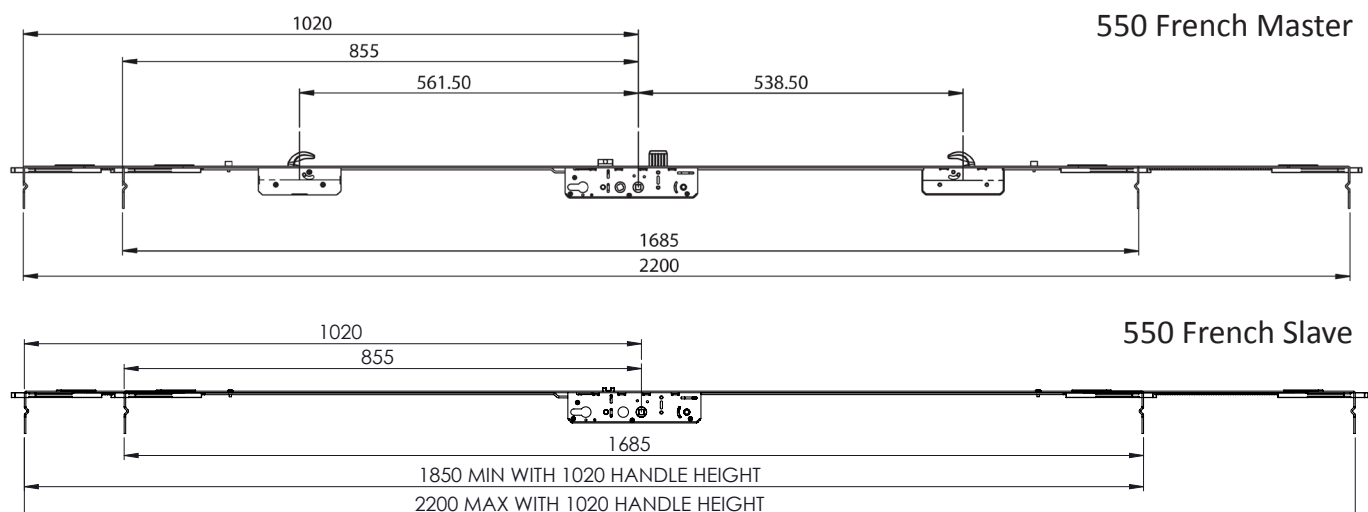
- 16mm faceplate, 35mm backset
- PZ92/62mm dual follower centre case
- Sash rebates: Min. 1852mm (1688mm with reduced handle height). Max. 2200mm
- Class-leading compression: 25mm direct drive centre bolt & optional roller cams
- Accredited protection: large, strong security hooks
- Profile-specific fully adjustable one-piece shootbolt keeps ensure easy installation
- Unique French door keeps give increased clearance
- Suitable for PVCu doors



GUARANTEES AND CERTIFICATIONS

- Tested to PAS24 & BS6375
- Secured by Design accredited
- Corrosion-resistant to EN1670: grade 4
- Tested over 50,000 cycles with a 10-year mechanical guarantee

TECHNICAL DRAWINGS



The Avantis 550 Series 35mm PVCu French Door Lock Master & Slave

COMPLEMENTARY HARDWARE

High security shootbolt extensions complement the french door locks for both standard and low threshold applications. The innovative profile-related shootbolt keeps offer maximum clearance. They also split to create two separate keeps to be used when extending only the slave door.



PART NUMBERS

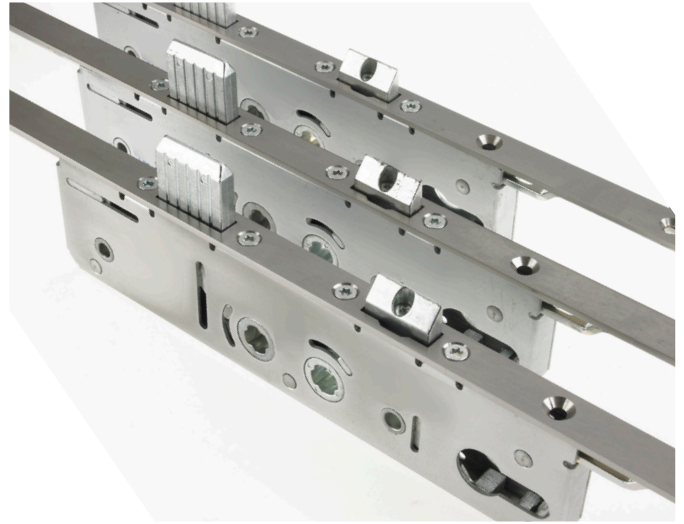
DESCRIPTION	CENTRE CASE	CENTRES	BACKSET	SPINDLE	HOOK	ROLLER	FACEPLATE	EXTENDABLE	PART CODE
550 Series French Door Master Lock	Latch & Deadbolt	92/62mm	35mm	Twin	2	2	16 x 2200mm Square End	Y	AVT155001S
550 Series French Door Slave Lock	Latch & Deadbolt	92/62mm	35mm	Twin	2	2	16 x 2200mm Square End	N	AVT100000
Top / Bottom Shootbolt	-	-	-	-	-	-	-	-	AVT90011
Top / Bottom Low Threshold Shootbolt	-	-	-	-	-	-	-	-	AVT90012

The Avantis 750 Series 35 & 45mm Timber/Composite Multipoint Door Lock

PRODUCT INFORMATION

This high-security locking system for timber and composite doors is armed with an impressive array of defences as standard. The large hook and bolt system is capable of defeating even the most aggressive and determined attack, as well as ensure the door is pulled in top and bottom for a firm, even seal that prevents bowing. The optional addition of Avantis' unique twin fix cylinder guard, bolsters security further with anti-pick, anti-bump, anti-snap and anti-drill cylinder protection.

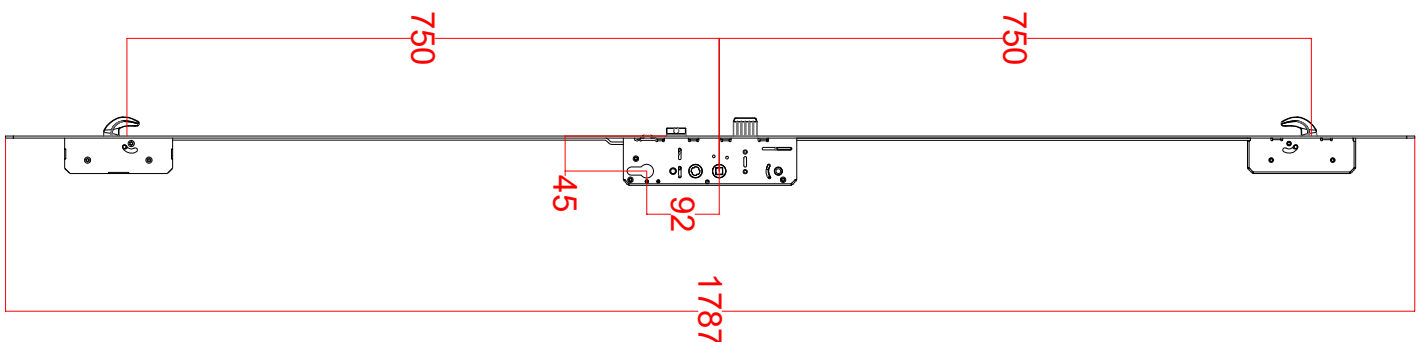
- 16mm and 20mm faceplates, square and radius cut
- 35mm and 45mm backsets available
- PZ92/62mm dual follower centre case
- Sash rebates: Min. 1852mm (1688mm with reduced handle height). Max. 2200mm
- Excellent compression: 25mm direct drive centre bolt & optional roller cams
- Accredited protection: large, strong security hooks
- Profile-specific fully adjustable one-piece keeps simplify installation
- Suitable for timber and composite doors



GUARANTEES AND CERTIFICATIONS

- Tested to PAS24 & BS6375
- Secured by Design accredited
- Corrosion-resistant to EN1670: grade 4
- Tested over 50,000 cycles with a 10-year mechanical guarantee

TECHNICAL DRAWINGS



PART NUMBERS

DESCRIPTION	CENTRE CASE	CENTRES	BACKSET	SPINDLE	HOOK	ROLLER	FACEPLATE	EXTENDABLE	PART CODE
750 Series Door Lock	Latch & Deadbolt	92/62mm	35mm	Twin	2	0	16 x 2200mm Radius End	N	AVT175001
750 Series Door Lock	Latch & Deadbolt	92/62mm	45mm	Twin	2	0	20 x 2200mm Radius End	N	AVT175011
750 Series Door Lock	Latch & Deadbolt	92/62mm	45mm	Twin	2	0	20 x 2200mm Square End	N	AVT175021



Set-for-Smart Kubu Door Lock

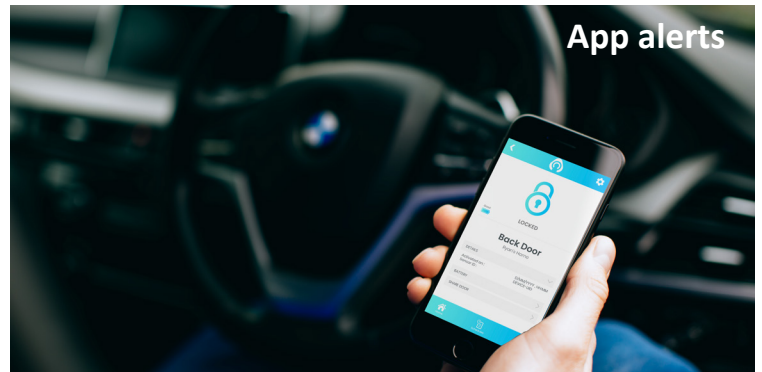
What is Kubu?



PRODUCT INFORMATION



Think smart locks are too costly or complicated to offer as standard? Think again! The new Kubu smart-equipped lock from Avantis Hardware is bringing smart hardware to the masses – simply and affordably – even for door manufacturers who build hundreds of doors per week! A competitive price point keeps your profit margins intact while clever engineering means Kubu integrates effortlessly into your current production line with no additional work or disruption on the factory floor, and no support burden for the fabricator or installer.



How does Kubu work?

From the moment a door is fitted with a Kubu lock at the factory, it is effectively 'primed for smart'. The homeowner then chooses at any time to purchase the Kubu starter kit and App and switch on smart capability themselves. Set-up is a cinch and takes just 15 minutes, after which they can check lock status remotely, track access and receive real-time notifications anywhere via their smart phone.

It's a no-sweat smart hardware solution

- ✓ **Future-ready and affordable** – easy, low-risk way for fabricators and fitters to offer smart hardware as standard and in volume to capitalize on the Smart Home Revolution.
- ✓ **Fuss-free fitting** – Kubu-equipped door locks are very easy to fit via a standard machine-routed prep, and because the electronic smart module is battery-powered and long life, there's no hardwiring required!
- ✓ **Stand out from the crowd** – This home tech solution adds real value for the homeowner, which all helps to give you the edge over your competitors and drive sales.
- ✓ **No extra work involved** – Fabricators and installers fit the Kubu equipped door lock and leave the homeowner to activate smart capability simply by purchasing a starter kit and installing the module and home hub themselves. You won't have to answer technical queries from consumers either, as there's a dedicated support team to take care of all that.
- ✓ **Free marketing support** – You'll have access to a wide range of free marketing materials to help you explain the benefits, win over customers and grow your business.



Call Sales on 01234 242724
to find out more and
request a quote.

www.windowware.co.uk | sales@windowware.co.uk

available from



AVantis®
More than manufacturing