

# Trojan 3D Composite Hinge Adjustment Details

**Part number:** HIN14\*\*\*\*

**Description:** Trojan 3D Composite Hinge

**Boxed quantity:** 24

**WINDOW  
WARE**  
*We've got it*



...The Strength of Hardware Design

## Tools required

- Drill
- Suitable pozi drive bit
- Flat screw driver (for compression adjustment)
- 4mm allen key
- 6mm socket spanner (for side-to-side adjustment)

An adjustment tool that combines both 6mm socket and 4mm Allen key part code: HIN14999



- A. Frame plate
- B. Slide plate
- C. Socket screw
- D. Hex pin (covered)

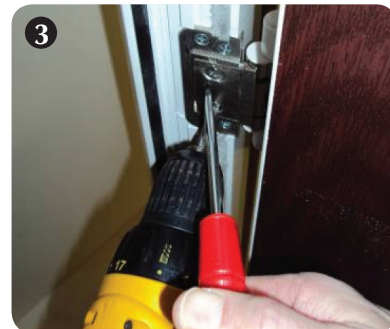
## Compression adjustment



Back off the 2 screws that clamp the slide plate (B) to the frame plate (A)

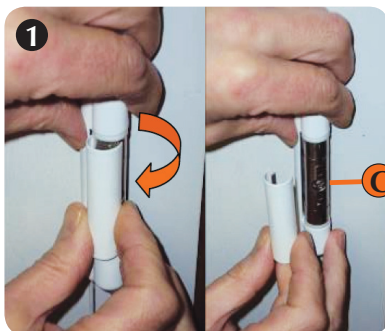


Insert a flat screw driver into the adjustment slot and lever the slide plate (B) in or out as required.



Tighten screws back up to secure

## Height adjustment



Remove the covers by prizing off with fingers to expose clamp and socket screw (C)



Back the screw off, using a 4mm allen key, by just a small amount (1/3 of a turn approx) to allow up and down movement only. Repeat on all hinges.



Use an air wedge (or similar) to lever and support the door at the correct height and tighten all screws to secure. Replace covers when finished.

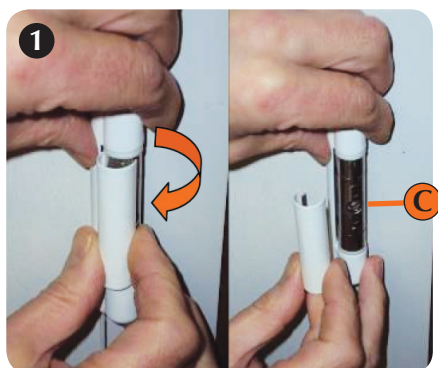
# Trojan 3D Composite Hinge Adjustment Details

Part number:	HIN14****
Description:	Trojan 3D Composite Hinge
Boxed quantity:	24

**WINDOW  
WARE**  
*We've got it*

**TROJAN**  
...The Strength of Hardware Design

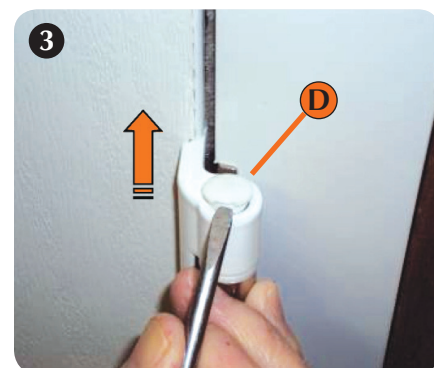
## Side-to-side adjustment



Remove the covers by prizing off with fingers to expose clamp and socket screw (C).



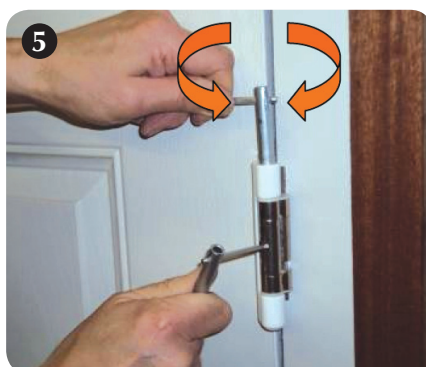
Back the screw off, using a 4mm allen key, at least 1 full turn. Only free off 1 hinge at a time unless you are adjusting the height at the same time.



Remove cap with screw driver to expose hex pin (D).



Insert 6mm socket spanner over hex pin and rotate to move door left or right as required.



Tighten screw back up to secure and replace covers when finished.