

Trojan Athena Hinge Adjustment Details

Part number: HIN194**

Description: Trojan Athena uPVC Hinge

Boxed quantity: 24



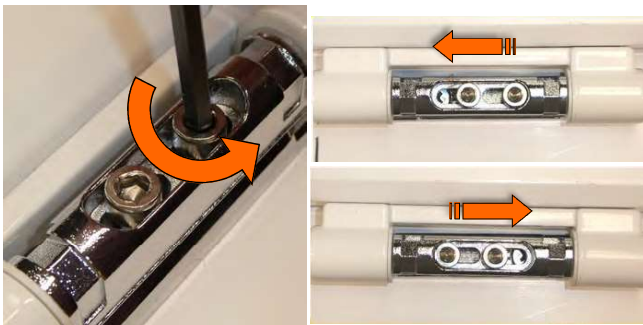
Hinge Adjustment Guide



Lateral Adjustment

+/- 4mm 4mm Allen Key

Lateral Adjustment: (Note Lateral and height adjustment can be made simultaneously)
Slacken off both M5 Cap Head Screws **on all hinges** (and ensure they are re tightened after adjustment) The Door can now be moved one way or the other about the nominal position



Height Adjustment

+/- 4mm 4mm Allen Key

Lateral Adjustment: (Note Lateral and height adjustment can be made simultaneously)
Slacken off both M5 Cap Head Screws **on all hinges** (and ensure they are re tightened after adjustment) The Door can now be moved up or down about the nominal position



Compression Adjustment

+ 2mm

3mm Allen Key

Open the Door to expose the Compression Adjustment Grub Screws
Rotate the Grub Screws Anti-Clockwise to increase compression using a 3mm Allen Key Note both Grub Screws must be rotated by an equal amount to ensure even adjustment