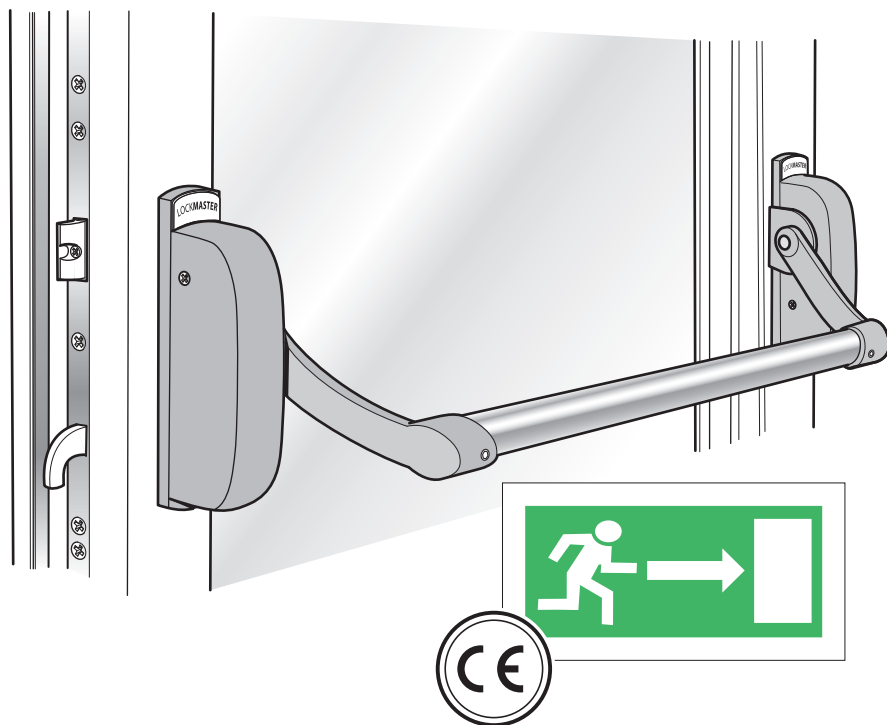




The world's favourite lock since 1843


Lockmaster® Panic Exit Device Installation Guide



LOCKMASTER®
MULTI-POINT PANIC DOOR LOCK

	Page
Index	02
In the kit : Single Door	03
In the kit : Double Door	04
In the kit : Outside access door handle	05
Preparing the door	06
Handing the kit, Left or Right	07
Attaching the units to the door	08-09
Double door kit installation	10
Outside access installation	11-12
Installing and trimming the bar	13
Funtionality test and fitting the covers	14
Final functionallity check	15
Support	16



 0425 - 2326 - 11	Yale Door & Window Solutions School Street, Willenhall, West Midlands WV13 3PW www.yaledws.co.uk
EN1125: 2008	3-7-6-0-1-4-2-1-A-A



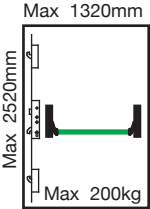
PED1000 Panic Exit Device

European Patent Application
No. 09155542.5

The safety features of this exit device are of fundamental importance to ensure its compliance with European Standard EN1125.

No modifications of any kind to the device other than those described in the fitting instructions are permitted.

Attention: Exit devices shall not include dogging (hold unlocked) when fitted to fire or smoke door assemblies.



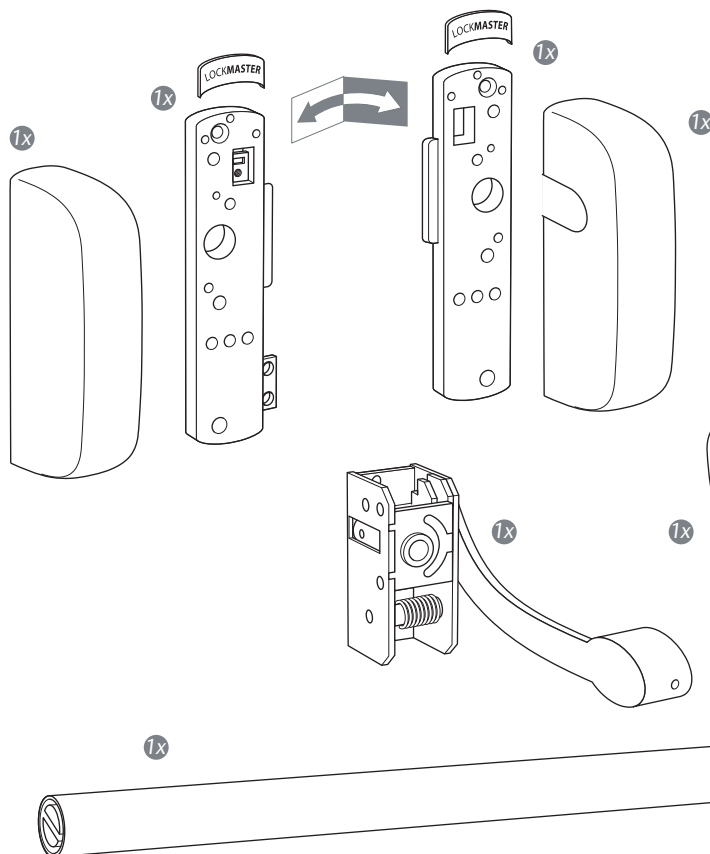
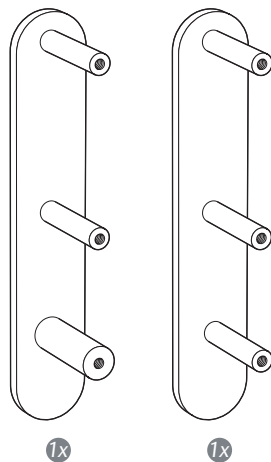
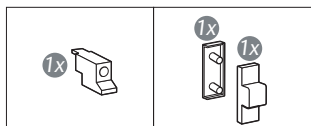
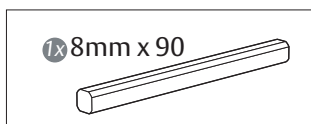
It is illegal to place windows and external pedestrian doorsets on the market without a CE mark and a Declaration of Performance. This is due to the European Construction Products Regulation which is EU law. The approved method to demonstrate compliance with the Construction Products Regulation for external doors and windows is described in the European Standard EN 14351-1 windows and external pedestrian doorsets without resistance to fire and smoke leakage characteristic.

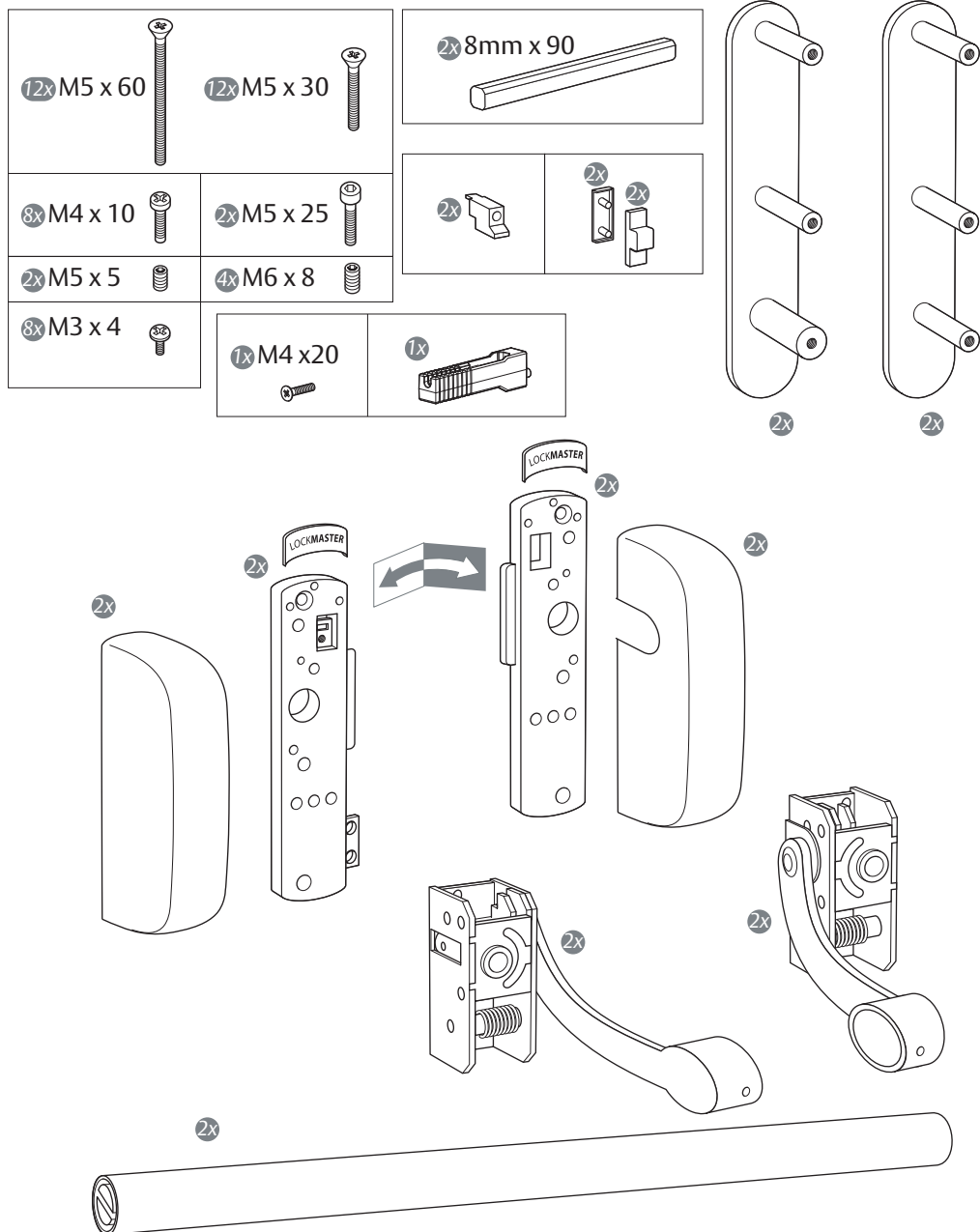
Requirements for emergency or panic exit devices falls under AVCP system 1 and requires that a Notified Body confirms your compliance by providing a Certificate of Constancy of Performance (CoCoP) for your doorset. Any emergency exit device or panic exit device fitted to a doorset must have been tested and CE marked (Certificate of Performance available on the Yale DWS Web Site) to relevant standards EN 179, EN 1125, prEN 13633 or prEN 13637.

Panic push bar kit - single doors (handed kits come partly assembled)



6x M5 x 60	6x M5 x 30
4x M4 x 10	1x M5 x 25
1x M5 x 5	2x M6 x 8
4x M3 x 4	

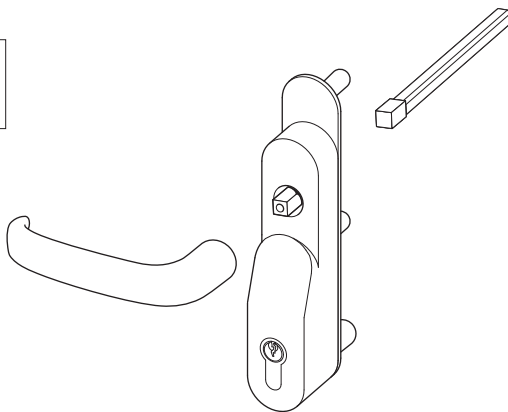


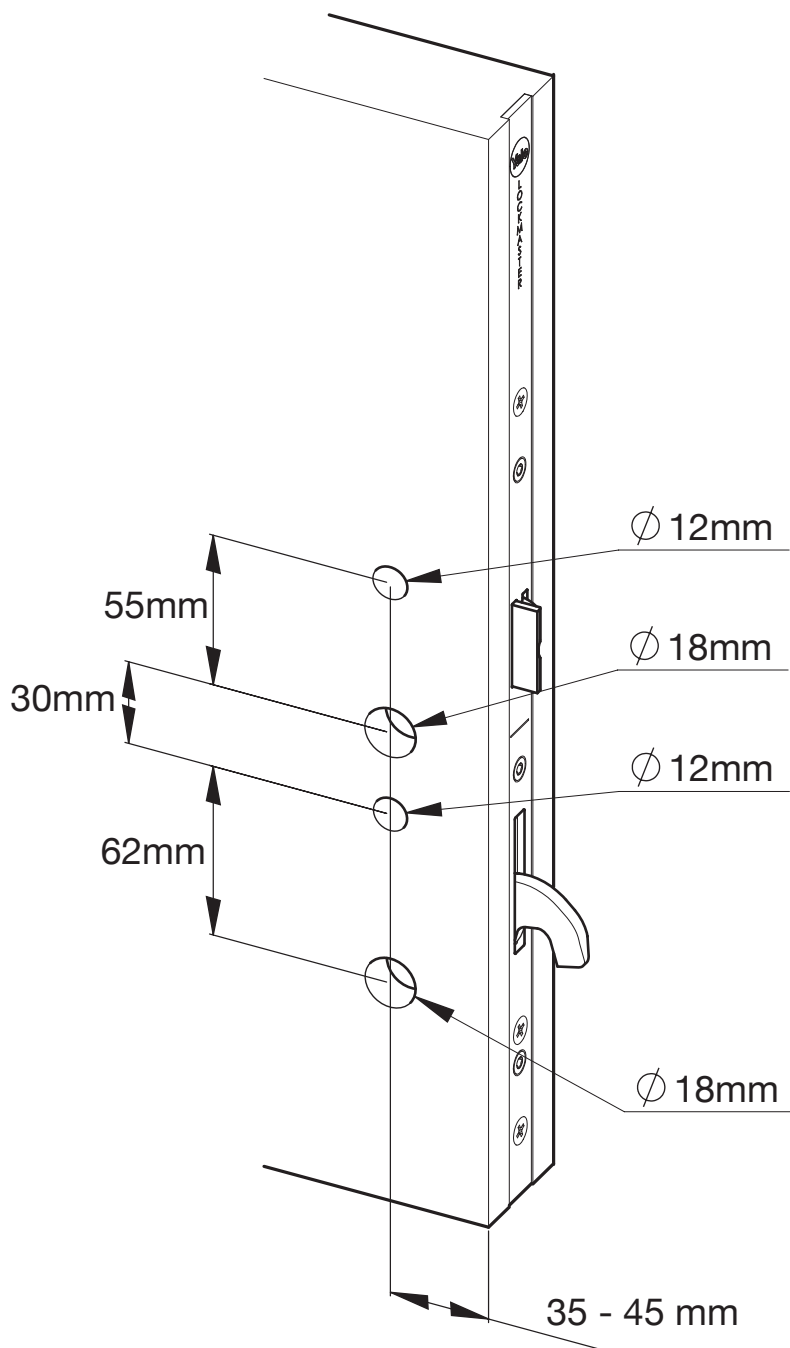


Outside access kit

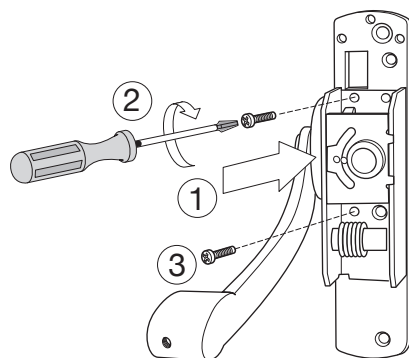
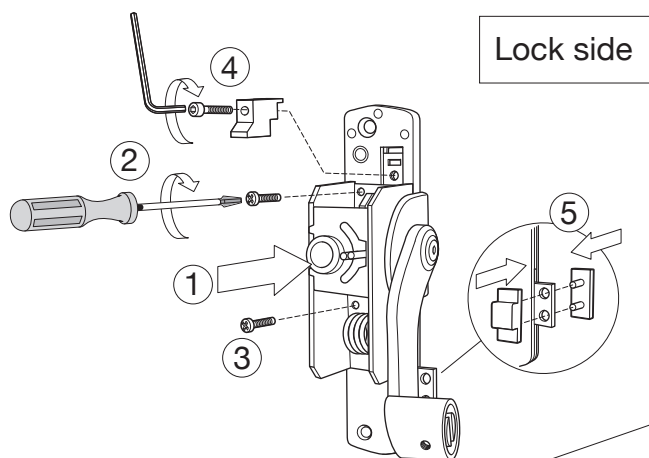
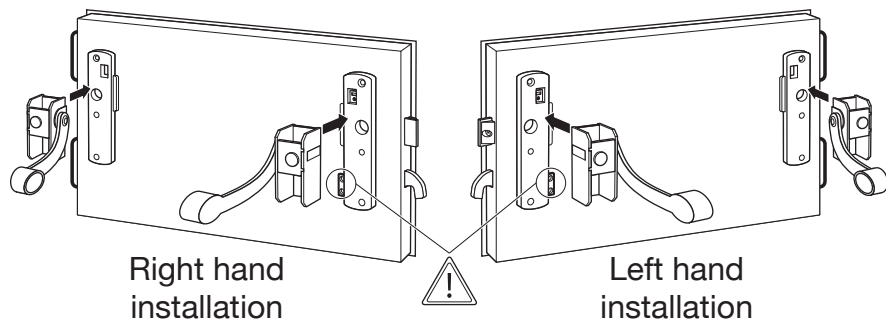


1x M5 x 45

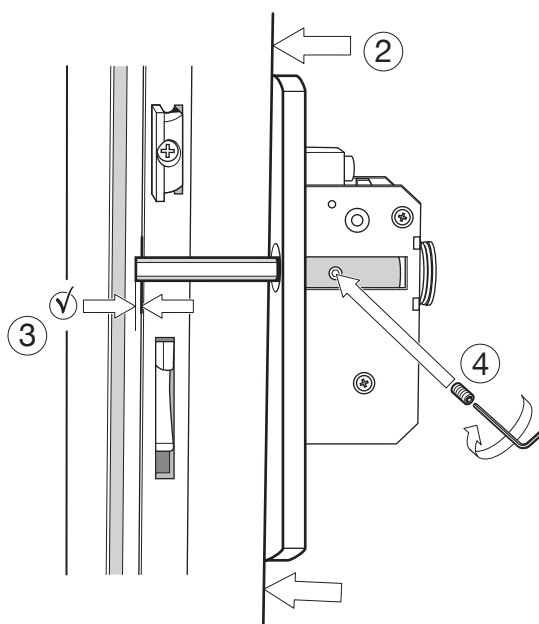
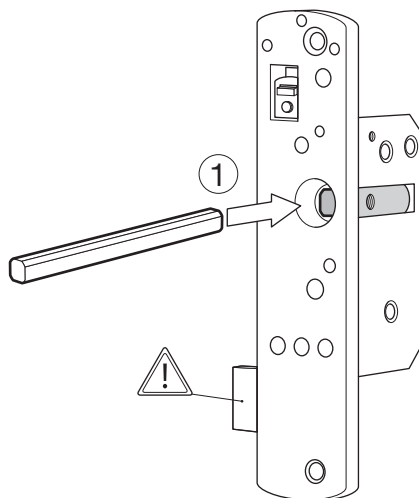




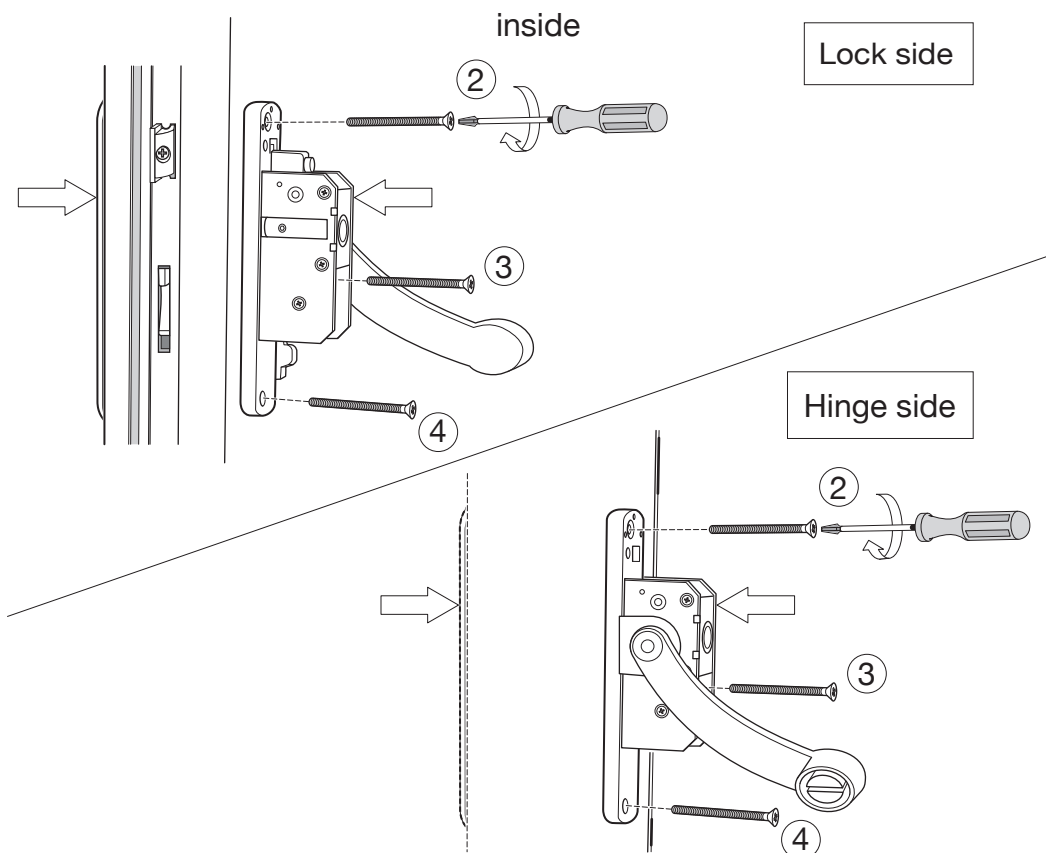
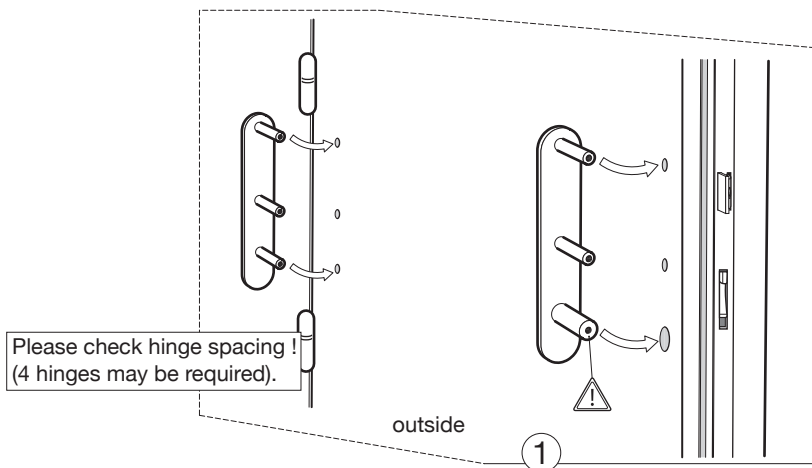
Panic push bar kit installation



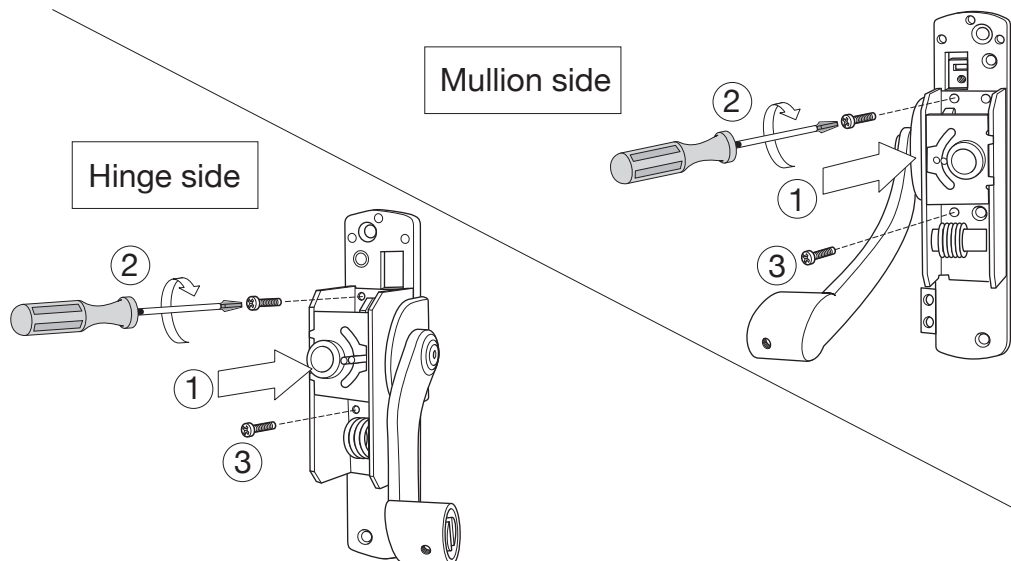
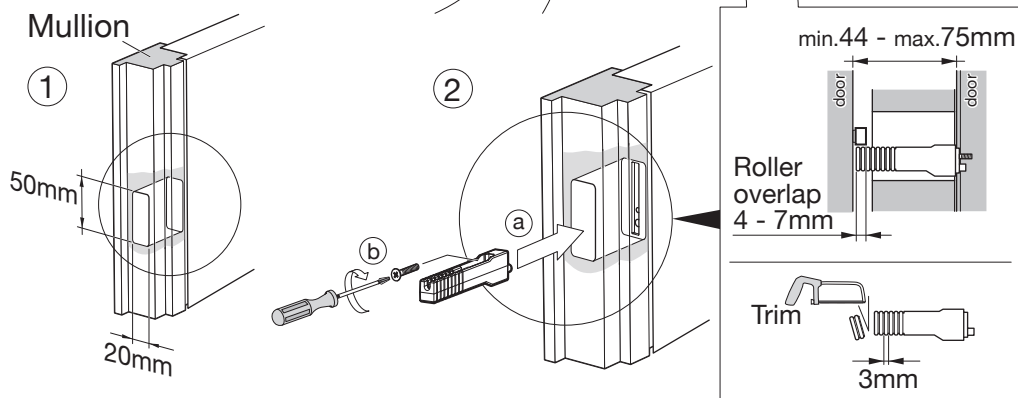
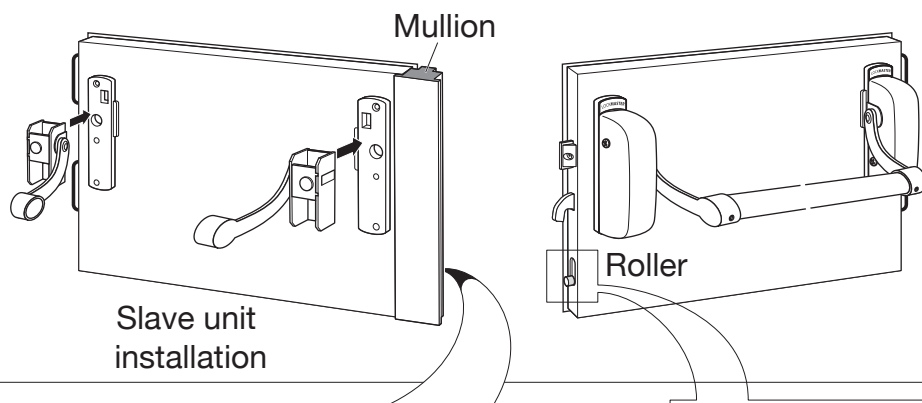
Panic push bar kit installation



Panic push bar kit installation

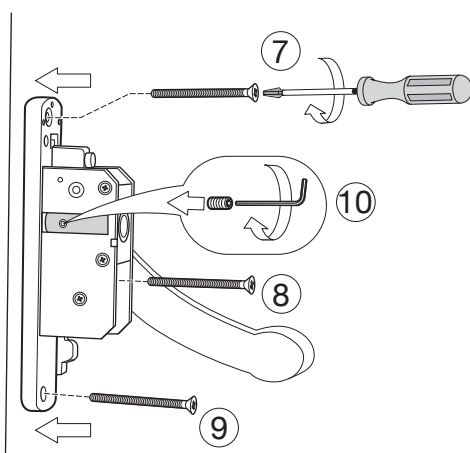
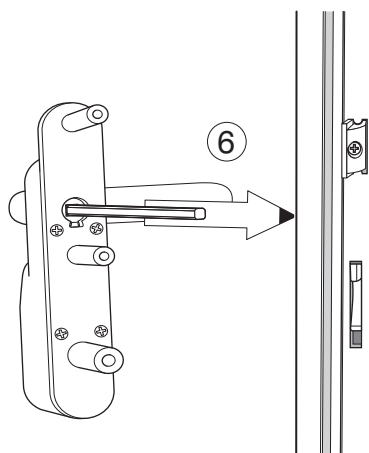
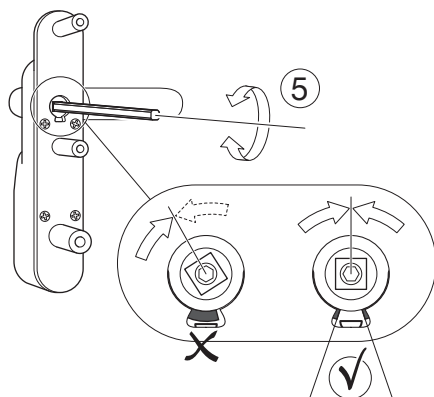
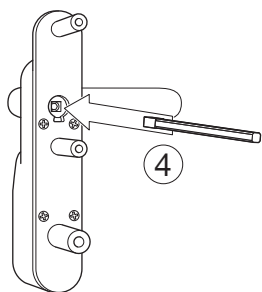
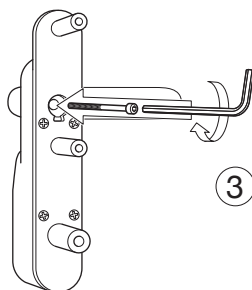
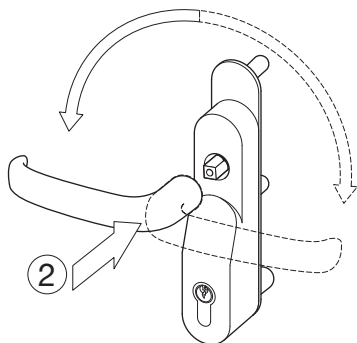


Double door "slave unit" bar kit installation

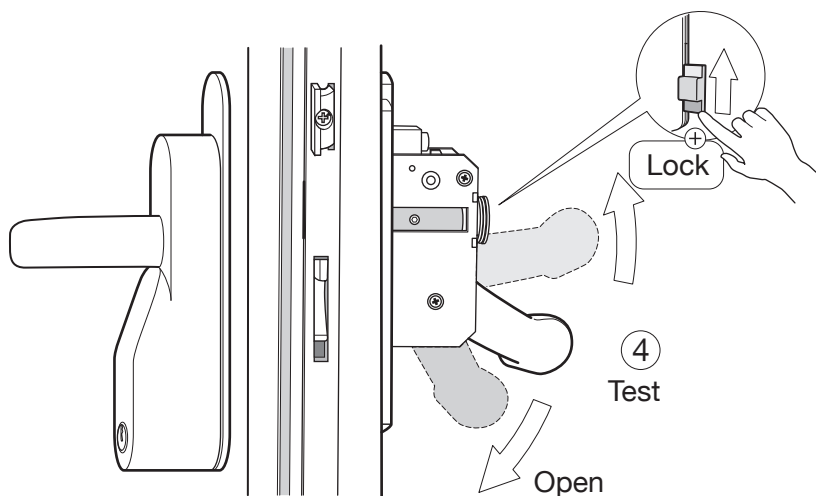
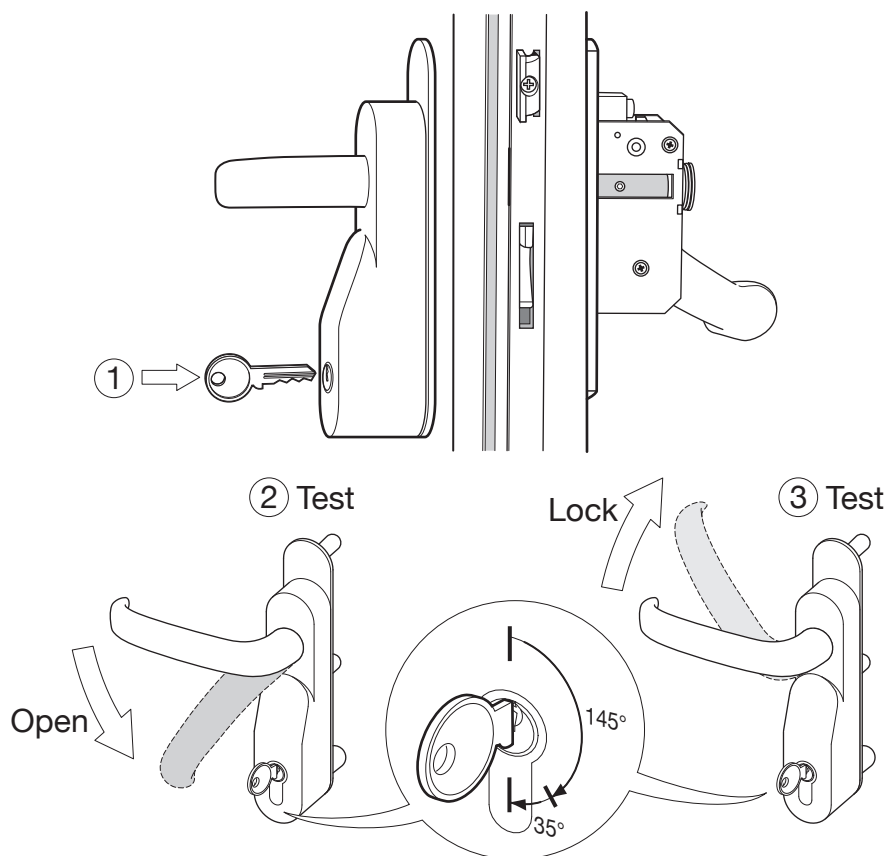


Outside access installation

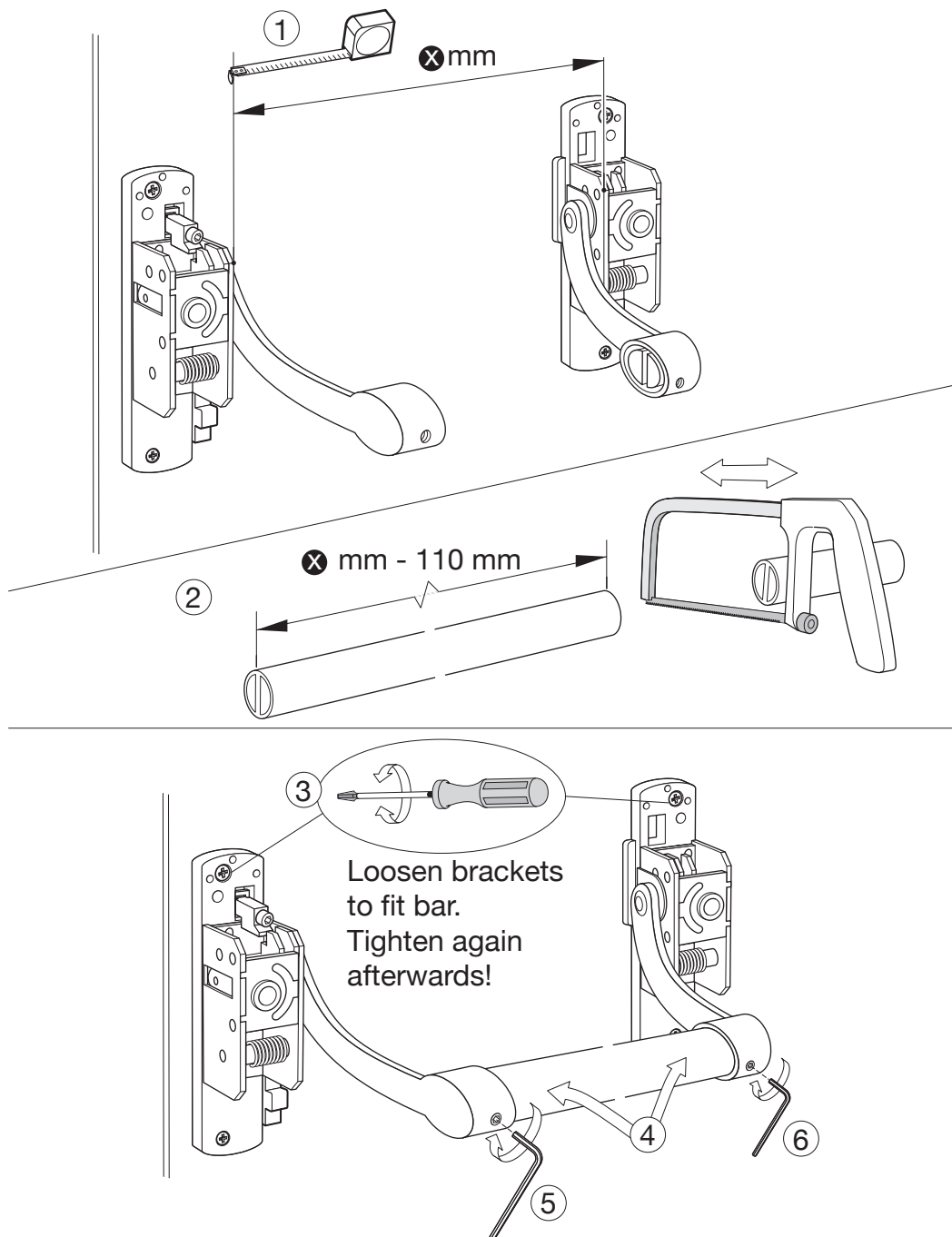
- 1 Point handle towards the hinge on the door and insert



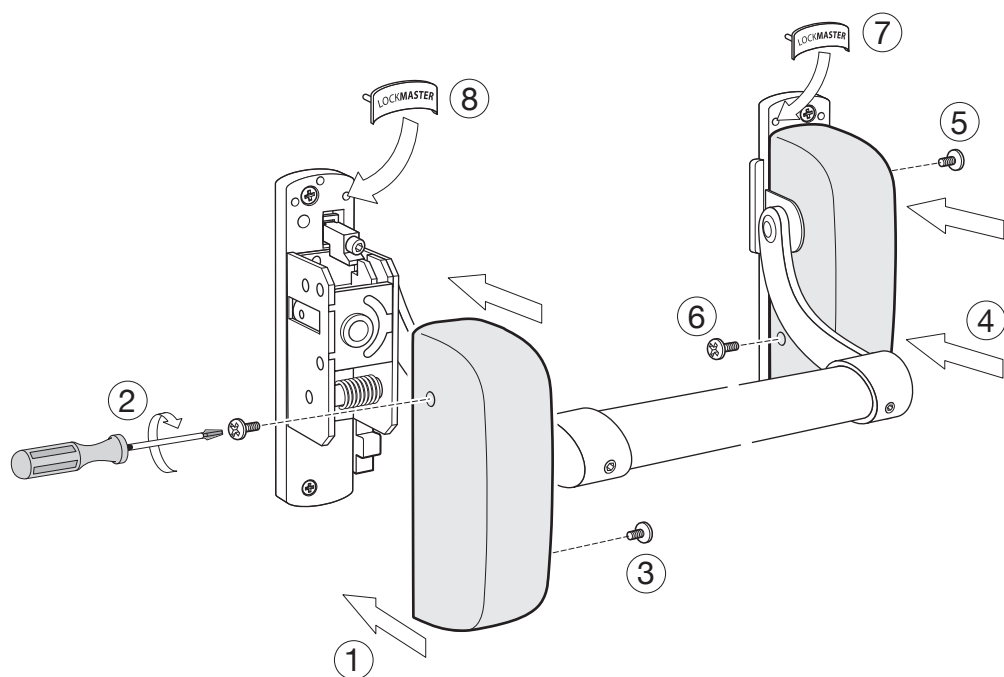
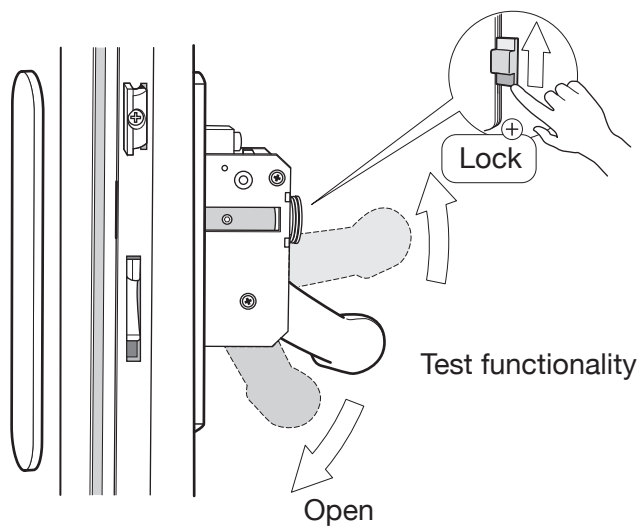
Outside access installation



Panic push bar kit installation

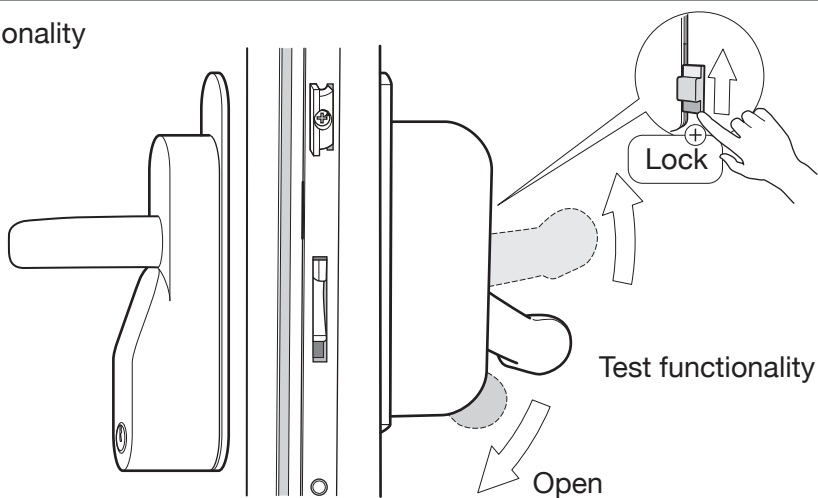


Panic push bar functionality test - covers and badges installation

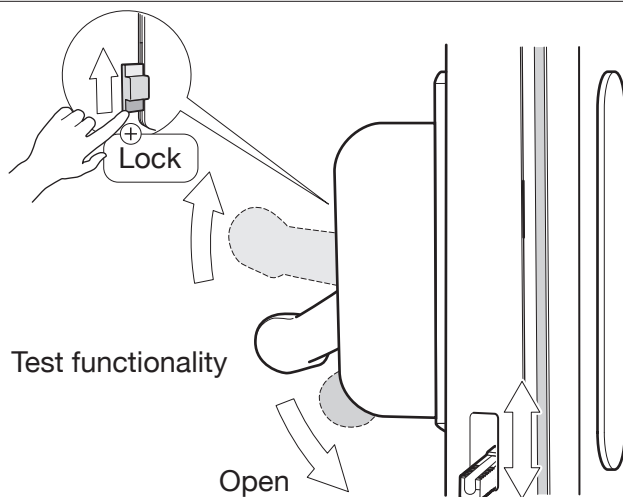


Test functionality

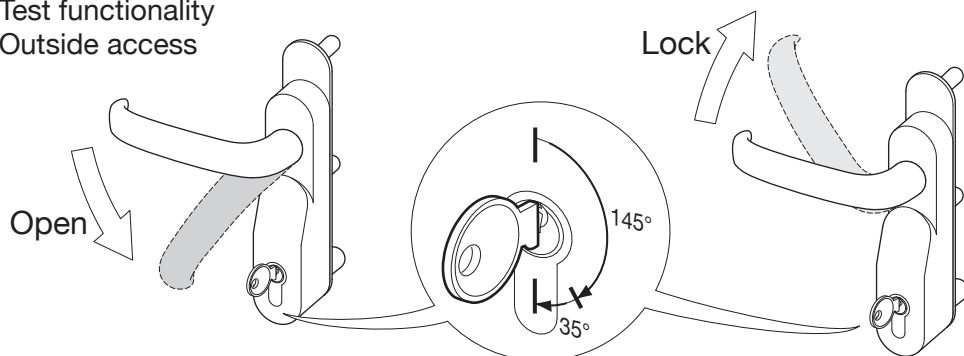
Test functionality Door 1



Test functionality Door 2



Test functionality Outside access



Support available

	Installation videos
	Available on yaledws.co.uk and youtube
	End user videos
	Available on yaledws.co.uk and youtube
	Installation guide
	Easy to follow installation guide/booklet
	Maintenance
	Ongoing maintenance guidance and record log



Yale Door and Window Solutions
School Street
Willenhall
West Midlands
WV13 3PW

THE YALE BRAND, with its unparalleled global reach and range of products, reassures more people in more countries than any other consumer locking solution.

THE ASSA ABLOY GROUP is the world's leading manufacturer and supplier of locking solutions, dedicated to satisfying end-user needs for security, safety and convenience.

Yale Panic push bar install
Issue 01 06.06.2018