

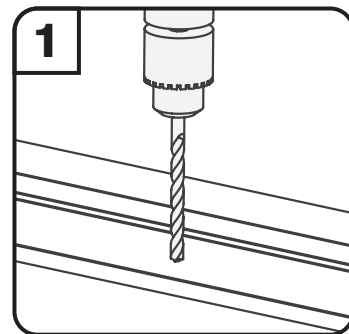
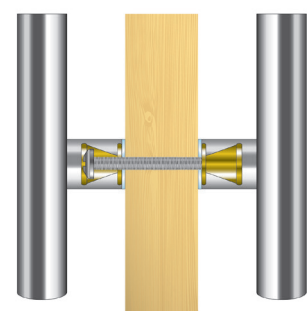
Supa™ Simple Pull Bar Installation.

Back-to-back installation

400mm - 1200mm pull bars have 2 fixing points

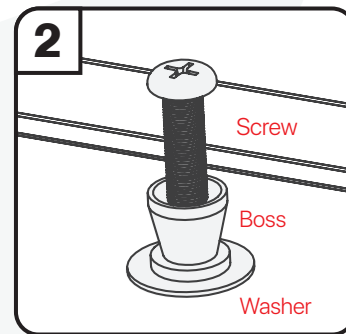
1400mm - 1800mm pull bars have 3 fixing points and require an additional fixing pack

Important. Choose the fixing location on your door carefully to ensure sufficient gearbox and cylinder clearance.



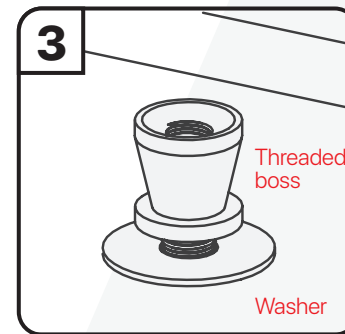
Drill an 8mm hole into the door at the required locations.

For accuracy, measure and mark both sides of the door.



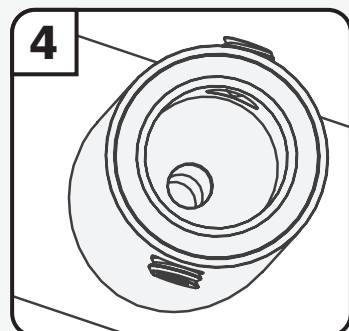
From the internal side of the door;

Slide a non-threaded boss (flat base towards the door) onto the M8 screw, followed by a clear plastic washer. Locate onto door, into one of drilled holes.

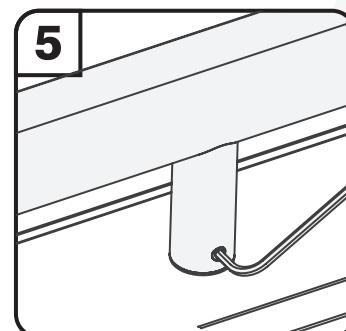


From the external side of the door;

Position a plastic washer over the screw followed by the threaded boss (flat base against the door) and tighten with PH3 screwdriver - do not over tighten. Repeat for remaining fixings positions.



On the pull bar; ensure grub screws are fully out before fitting over boss.



Locate pull bar over the boss, tighten both grub screws on both to secure.

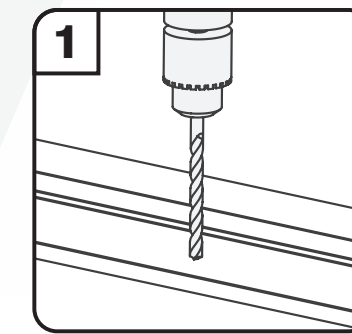
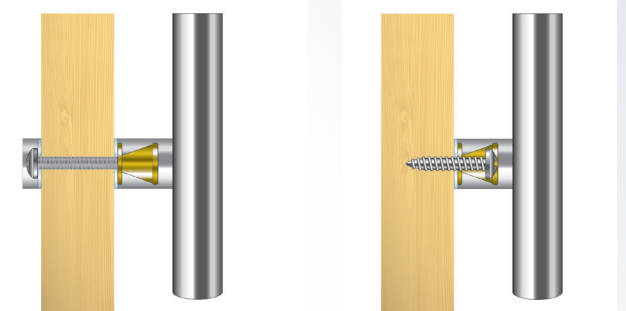
Fixing Kit Guide.

Through & Concealed installation

400mm - 1200mm pull bars have 2 fixing points

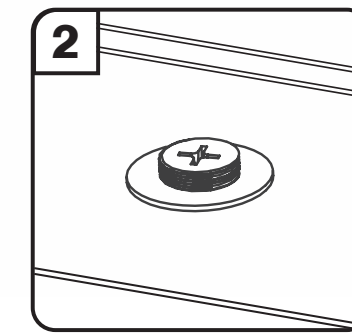
1400mm - 1800mm pull bars have 3 fixing points and require an additional fixing pack

Important. Choose the fixing location on your door carefully to ensure sufficient gearbox and cylinder clearance

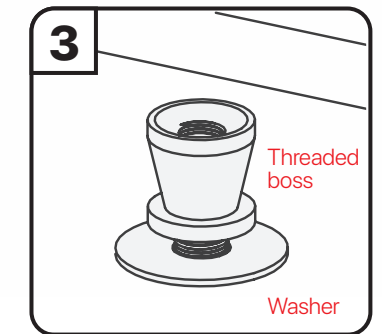


Drill an 8mm hole into the door at the required locations.

Through fix - for accuracy, measure and mark both sides of the door.



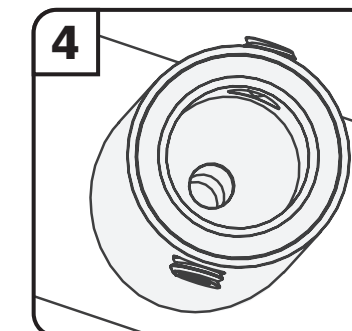
Through fix: from the internal side of the door, slide a clear plastic washer onto the M8 screw and locate onto door, into one of drilled holes.



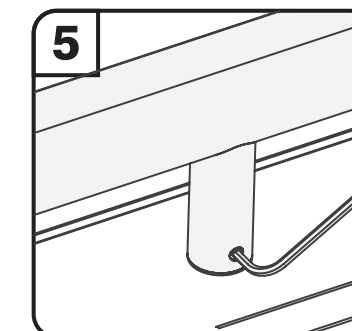
Through fix: From the external side of the door, position a plastic washer over the screw followed by threaded boss (flat base against door)

Concealed fix: From the external side of the door, thread the screw through the boss and a washer and locate the flat base against door.

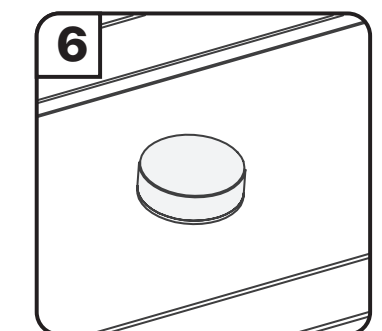
Tighten with PH3 screwdriver - do not over tighten. Repeat for remaining fixings positions.



On the pull bar; ensure grub screws are fully out before fitting over boss.



Locate pull bar over the boss, tighten both grub screws on both to secure.



Through fix: from the internal side of the door; screw disc over screw and washer.