

# Delta Door Hinge

**WINDOW  
WARE**

*We've got it*

**DELTA**

## Simple Fabrication

Packed in trays of 3 and supplied in 5 parts, speeding up the fitting

## Secure

Meets the requirements of PAS24

## Non Drop

Designed specifically to minimise likelihood of dropping

## Common Profile Upstand Stocked

Available in 21mm upstand



## High Performance

Meets the requirements of PAS24

Tested to 100,000 cycles

Tested to 100 kg with 3 hinges

Satin Finish - Meet the requirements of BS EN1670:2002 - Grade 4. Providing 240 hours corrosion resistance

All Others - Meet the requirements of BS EN1670:2002 - Grade 5. Providing 480 hours corrosion resistance

## Adjustments

Compression: +/-1mm

Height: +4mm or -1mm

Lateral: +/-5mm

## A Solid Installation

Hinge cover protects and provides an adjustment guide

4mm key provided for vertical, horizontal & compression adjustments

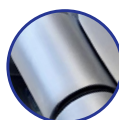
Sash cover slides into place, hiding any fixings

## A Match Made In Heaven

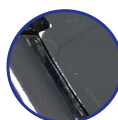
Matching cover caps for a seamless finish



White



Satin  
Silver



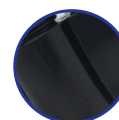
Chrome



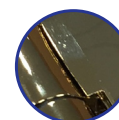
Anthracite  
Grey  
RAL7016



Brown



Black



PVD Gold

