



MARK OF DISTINCTION

Regal[®]
Hardware

REGAL DOOR HANDLE ASSEMBLY AND FITTING INSTRUCTIONS

The screw and spindle pack included as standard in the Regal Hardware door handle box are designed to fit doors with a sash thickness of 70-75mm. For doors with a sash thickness of between 44-90mm, please purchase the additional screw and spindle pack (sold separately).

Attaching the lever to the backplate:

1. Remove the lever and backplate from the packaging.
2. In the lever pack, you will find 2 x small screws which come ready-coated with pink Loctite threadlocker. These will be used to securely join the lever and backplate together to form the handle assembly.
3. Slide the lever onto the backplate.
4. On the reverse side, insert the screw through the handle base hole.
5. Insert a screwdriver into the backplate boss and tighten up the screw fully, taking particular care to **NOT OVERTIGHTEN**
6. Test the lever to make sure the handle can be operated properly. If the lever does not move up and down, slacken off the screw. **IMPORTANT!** Do not forget to slacken the screw off to allow normal lever operation, as once the Loctite threadlocker sets, you will not be able to adjust the lever. The lever itself must be secured tight enough to prevent lever wobble, but not too tight as to prevent the smooth operation of the lever.
7. Repeat these steps for both the internal and external door handle assembly.

Fitting the handle to the door :

Please note, we recommend attaching the lever to the backplate first and fitting the whole handle assembly to the door for best results. Sometimes, door manufacturers will supply new doors fitted just with the base plate to avoid damage to the levers in transit. In these instances, please remove the internal backplate by unfastening the two screws and then follow the lever assembly instructions.

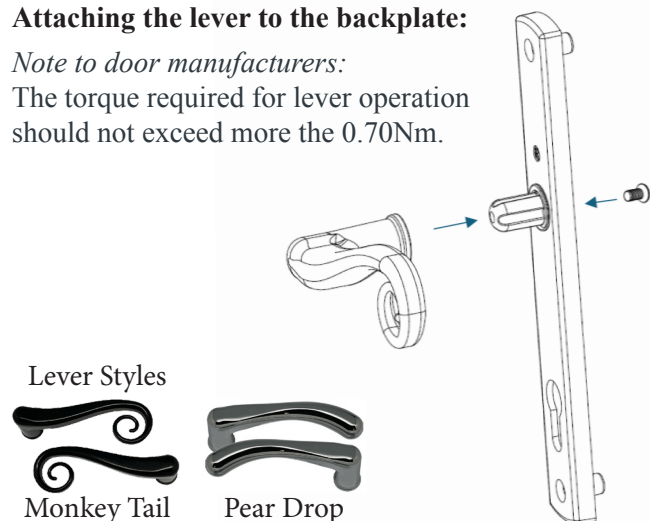
Before attempting to fit the handle, please ensure the door is in the open position as you will be working on both sides of the door.

1. Slide the spindle through the door, making sure that it goes into the spindle hole of the door lock.
2. Slide both completed handle assemblies onto the spindle and press them up against the door sash. **IMPORTANT:** The backplate with screw holes must go on the inside of the property.
3. Insert the screws and tighten using a standard screwdriver to ensure a solid fit – Do not use a power screwdriver as there is a greater risk it could slip and damage the handle finish.

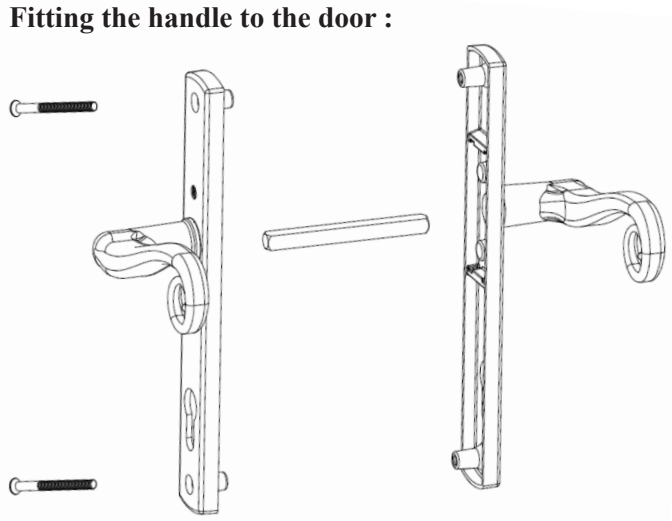
Attaching the lever to the backplate:

Note to door manufacturers:

The torque required for lever operation should not exceed more the 0.70Nm.



Fitting the handle to the door :



Though these diagrams show the monkey tail door handle, the same assembly & fitting instructions apply to all Regal Hardware door handle designs.

T 01234 242724 E sales@windowware.co.uk W windowware.co.uk